

DEVELOPING
PROFESSIONALS
C T E B V I

ANNUAL CONFERENCE
59th



**LOS ANGELES
AIRPORT MARRIOTT
APRIL 12-14, 2018**

Junior Blind has a new name!



We're so proud of Junior Blind's long history of serving children, youth and adults who are visually impaired and those with developmental disabilities. It's an exciting time in our history as we extend our hands to help children and families facing different challenges. Wayfinder Family Services embraces everyone we serve.

Helping children, youth and adults reach their greatest potential through state-wide programs.

Educational WAYFINDER



Recreational WAYFINDER



Residential WAYFINDER



Rehabilitative WAYFINDER



Learn more at www.wayfinderfamily.org



CALIFORNIA TRANSCRIBERS
AND EDUCATORS
FOR THE BLIND AND
VISUALLY IMPAIRED

CONTENTS

4

Conference Information

General information including registration and Continuing Education Units

6

Conference Location

Los Angeles Airport Marriott amenities

7

Conference Highlights

Preconference Events for Thursday, April 12th

9

Conference Schedule

Daily schedules, Youth Institute, & Parent Institute information

13

Conference Menu

Breakfast Buffet, Friday Banquet, Saturday Lunch Buffet

15

Workshop Schedule

Available workshops by day & time

35

Presenters

Curriculum Vitae

59

Exhibitors

Exhibit Hall vendors

Guide Dogs for the Blind (GDB) is more than an industry-leading guide dog school; we are a passionate community that serves the visually impaired from throughout the U.S. and Canada. All of our services are provided free of charge, including veterinary assistance as needed.

K9 BUDDIES

Our K9 Buddy Program matches specially selected dogs to become wonderful pets to children and young adults who are blind or visually impaired and their families. The K9 Buddy program connects the child/family with our community of puppy raisers and other supporters, including agencies and organizations for the blind. K9 Buddies are offered free of charge.

CAMP GDB

A free summer camp open to visually impaired youth ages 14-17 who are considering the guide dog lifestyle. Camp GDB takes place July 22-26, 2018 at the Oral Hull Foundation for the the Blind in Sandy, Oregon.

O&M RESOURCES

We would like to partner with you! We offer a variety of resources for O&M specialists, including:

- **FREE O&M Seminars** (qualifies for CE credits)
- **FREE O&M Immersion Program** (refer your potential GDB clients to this in-depth O&M training program)
- **FREE Guide Dog Lifestyle Workshops** (hands-on workshops for those interested in the guide dog lifestyle)



To learn about these and other programs, please visit our website at guidedogs.com, or call us at 800.295.4050.



Guide Dogs for the Blind

CONFERENCE INFORMATION

ONSITE REGISTRATION

You may register at the Registration Desk. Please note that on-site registration is nonrefundable.

CHECK-IN FOR PRE-CONFERENCE WORKSHOPS ONLY

Thursday, April 12	8:00 am - 9:30 am
	12:00 pm - 1:00 pm
	2:30 pm - 3:30 pm

REGULAR CONFERENCE REGISTRATION

Thursday, April 12	4:30 pm - 6:30 pm
Friday, April 13	6:30 am - 5:00 pm
Saturday, April 14	6:30 am - 5:00 pm

CONTINUING EDUCATION UNITS

CEUs are again being offered with an ACVREP fee of \$35, payable in advance with registration fee. This fee will allow CEUs for an unlimited number of workshops. You will get instructions for receiving certificates after conference. Please provide an email address where you wish the instructions to be sent.

SILENT AUCTION

All proceeds of the silent auction go to the Donna Coffee Youth Scholarship Fund. This event also provides you with the opportunity to take home some beautiful gifts.

Silent Auction items must be claimed and paid for by the close of the Exhibit Hall unless other arrangements have been made. Items not claimed will be offered to the next highest bidder. GOOD LUCK!!!

HOSPITALITY SUITE

The hospitality suite will be open in the evenings. Please join us Friday from 9 - 11 pm and Saturday from 8 - 11 pm.

ANNOUNCEMENT BOARD

Have an announcement or job opening? Please feel free to post it on the board that will be located near the Registration Desk.

EXHIBIT HALL

Exhibit Hall attendance is free to everyone! CTEBVI's Exhibit Hall offers a large number of vendors presenting the latest in assistive technology, braille jewelry, and really neat toys. Special times have been set aside exclusively for the Exhibit Hall that will be listed in the conference program.

AmericanThermoform

products for the blind and visually impaired since 1962

The highest quality, lowest priced, true production Braille embosser available



BRAILLO ●

True Production Braille, Quality You Can Trust

Braille publishers count on running their machines 24/7, at high speeds while continuously producing high quality Braille documents. High quality throughput means profit. Only Braillo true production Braille embossers can perform at this level. Trust your business to the industry leader with 30 years dedicated to engineering the best production Braille embossers. Trust your business with Braillo.

- The only manufacturer of true production Braille printers
- Built specifically for all-day, heavy duty Braille embossing
- Perfect Braille alignment – every time
- Industry leading 3 year comprehensive warranty
- The most trusted Braille translator, Duxbury, included free

BRAILLO 300 S2

The Braillo 300 S2 Braille embosser is a reliable and dependable embosser for light to heavy Braille production. Embossing at 300 CPS (900 pages per hour) using continuous / tractor / fanfold Braille paper, it offers exceptional dot quality and consistency. Its combination of speed, durability, reliability and quietness are the reasons why it is used across the world by most of the largest Braille production facilities.

Feature Highlights:

- Superior Braille quality and reliability
- Lowest priced true production Braille printer available
- Easy to setup and easy to service
- The most trusted Braille translator, Duxbury, included free
- 300 characters per second (900 pages per hour)

www.BRAILLO.com

AMERICAN THERMOFORM

1758 Brackett Street
La Verne, CA 91750
Tel: (800) 331-3676
Tel: (909) 593-6711
Email: sales@americanthermoform.com
Web: www.americanthermoform.com



CONFERENCE LOCATION

Los Angeles Airport Marriott

LOS ANGELES AIRPORT MARRIOTT

5855 West Century Boulevard,
Los Angeles, CA 90045
310-641-5700 / 800-228-9290

TRANSPORTATION TO/FROM LAX AIRPORT:

Free shuttle bus to the hotel, proceed to the red designated curbside waiting area.
Blue hotel shuttles arrive every 20-25 minutes.

PARKING:

On-site parking fee \$18 USD daily; \$27 for valet.
Mention CTEBVI Conference for this rate.

ONSITE RESTAURANTS:

Starbucks, Hangar 18, JW Steakhouse
(Information on other restaurants is available at the hotel concierge desk.)

AMENITIES:

- Complimentary wireless internet connectivity is available in the public areas.
- Internet is available in guest rooms for \$12.95 USD/day or \$16.95 per day for enhanced high speed access.
- Beautiful, newly renovated rooms.
- 24-hour fitness room and pool and spa are open from 8:00 am - 10:00 pm.
- This hotel has a smoke-free policy.
- ADA-accessible rooms are available.
For more information contact the general manager at the hotel.
- Concierge Level offers upgraded amenities and services to guests.
- Additional amenities include concierge, valet, dry cleaning and room service.
- A dog relief area will be designated. Please ask for the location when you check in.
- On-site car rentals

CONFERENCE HIGHLIGHTS

THURSDAY, APRIL 12

Registration is required in advance; check-in is 8:00 - 9:00 am,
12:00 pm - 1:00 pm, or 2:30 - 3:30 pm

PRE-CONFERENCE EVENT 1

How to administer and support your student through the SBAC Test

(This workshop replaces the one in the previous edition of the registration packet.)

Presenters: Yurika Vu and the AT staff from CSB

Time: 9:00 am - 3:00 pm

Location: LAX Marriott - Boston Room

We will discuss what's new in this year's test! This workshop will be broken up into two parts. The first session will include an overview of computer hardware/software requirements & configurations, a demonstration of navigating the test using JAWS, Braille Display, & Magnification, a demonstration of the Test Administrator (TA) and student interface, a walkthrough of the student practice and training tests. The second session will allow you to have hands on practice of administering the test, taking the test as a student, and embossing sample test questions with the Tiger Max.

It is highly recommended to attend the hands on portion of this workshop. Please be prepared and bring the following:

- Laptop with Headphones -- <http://ca.browsers.airast.org/> • CA Secure Browser 10 ()
- JAWS 18, or 2018 and/or ZoomText (whichever is applicable to your student)
<https://viewplus.com/viewplus-support/desktop-driver/>
- ViewPlus Desktop Embosser driver on TA computers only.
- Test Administrator login & student SSID (if desired)
- 40 cell braille display (if applicable)

PRE-CONFERENCE EVENTS

PRE-CONFERENCE EVENT 2

APH BrailleBlaster: An Innovative New Braille Translation Software

Presenter: William Freeman

Time: 1 pm - 5 pm

Location: LAX Marriott - Atlanta Room

BrailleBlaster is a revolutionary new braille software tool for braille transcribers and others who need to produce high-quality braille material! It takes advantage of the rich markup contained in NIMAS (National Instructional Materials Accessibility Standard) files and EPUB files to automate basic translation and formatting and to make advanced tasks quicker and easier. Designed primarily for transcribing textbooks to meet the specifications published by the Braille Authority of North America (BANA), the purpose of BrailleBlaster is to help braille producers ensure that all students have their braille textbooks on the first day of class. This software will also create new documents and works with other document types, including Word, classroom assignments, letters, documentation, and more, no NIMAS file required! This software is free to all and available for download at brailleblaster.org.

This workshop will introduce the new software and provide training on how to use it. We encourage participants to bring their own computers. This software requires Windows 7 or newer or Mac OS.

Please indicate if you are bringing a laptop to the workshop.

We plan to contact each participant prior to the workshop to distribute the newest version of BrailleBlaster, ensure their computers are compatible with the software, and distribute any notes or documentation.

PRE-CONFERENCE EVENT 3

Cleaning and Oiling A Perkins Braille Writer

Presenters: Chester Goodale and Justin Adams

Time: 3:30 pm - 5:30 pm

Location: LAX Marriott - Boston Room

Did you know that most brailers that need “repair” only need to be cleaned and oiled to be restored to service? At this workshop we will walk you through the steps to clean and oil a dirty, gummy, Perkins Brailier.

Bring a dirty brailier (or two!) to clean, or practice on one of ours. Each attendee will receive a kit containing brushes, oils, tools, and a cleaning cloth.

CONFERENCE SCHEDULE



Keynote Speaker: Dr. Craig Meador *Friday Banquet, April 13th*

A former teacher and educational leader for blind and visually impaired children, Craig has served as APH's President January 2016. Craig was charged with carrying forward the strong work of APH while creating new direction that would position the company to meet the needs of individuals with vision loss in a rapidly changing world.

Craig came to Louisville and APH from the state of Washington where he was employed as the Director of Outreach Services/State Vision Consultant. In that position, he served as the state department's APH Ex Officio Trustee and a member of the APH Educational Products Advisory Committee (EPAC). Prior to that, he was Principal of the Washington State School for the Blind; he served the state school for 24 years, beginning as a teacher. Craig earned an undergraduate degree from Western Oregon State University, a master's degree in Special Education from Portland State University and educational doctorate degree from Washington State University.

THURSDAY, APRIL 12

WELCOME RECEPTION.....7:00 PM - 9:00 PM

Sponsored by Transcribing Mariners - Enjoy complimentary hors d'oeuvres and a no-host bar.

FRIDAY, APRIL 13

BUFFET BREAKFAST 7:30 AM - 8:30 AM

Location: Salons 1, 2, & 3

GENERAL BUSINESS SESSION I..... 8:30 AM - 9:30 AM

Cristin Lockwood - CTEBVI President
and Maureen Reardon - CTEBVI Vice President

Jane Thompson
Director, Accessible Tests and Textbooks Department, APH

Cheryl Kamei-Hannan, Ph. D - Associate Professor, CSULA
and Yue-Ting Siu, Ph. D - Assistant Professor, SFSU

David Lepofsky
Disability Advocate, Adjunct professor,
University of Toronto School of Law

Peggy Schuetz
Director of Operations, Transcribing Mariners,
CTEBVI Board member

EXHIBIT HALL/SILENT AUCTION.....9:00 AM - 5:00 PM

Browse the exhibitors' booths, see demonstrations on the latest assistive technology, and bid on silent auction items.

NO-HOST COCKTAILS RECEPTION 6:00PM

FRIDAY *(continued)*

BANQUET DINNER **7:00 PM - 9:00 PM**

CTEBVI Awards



Julie Bernas-Pierce
Special Recognition



Theresa Postello (1951-2017)
Distinguished Member

Keynote Address: Dr. Craig Meador - President, American Printing House for the Blind

ACABELLA! Academy of Music for the Blind acapella choir

iPad Drawing - You must be present to win.

HOSPITALITY SUITE OPEN **9:00 PM - 11:00 PM**

Entertainment by Acabella!

Friday Banquet, April 13th

AMB's acapella choir is named "Acabella!", a quartet of 4 girls ranging in age from 10 to 13 years. They all have perfect pitch and are solo performers in their own right. Members are:

Dorothy Cho, 13 years old. From Orange County, Dorothy is also an excellent guitar player and studio engineer.

Riya Golakeia, 10 years old.
From Burbank, Riya is a wonderfully creative composer and improviser on the piano, drums and voice

Brianna Vieyra, 10 years old. From Baldwin Park, Brianna has an amazing ability to sing in any style of music. She is also an outstanding conga player.

Natalie Fuentes, 11 years old. From Bell, Natalie is a prolific blues and R & B singer and composer.



CONFERENCE SCHEDULE

SATURDAY, APRIL 14

BUFFET BREAKFAST 7:30 AM - 8:30 AM

Location: Salons 1, 2, & 3

GENERAL BUSINESS SESSION II..... 8:30 AM - 9:30 AM

Sergio Oliva - National Programs Director, Braille Institute
and Rob Schulenburg - Director of Youth Transition Services, Wayfinder Family Services

Jayma Hawkins
Braille Transcriptions Services Supervisor, APH.

Judith Lesner and Anne Ward
CAPVI co-directors

Cristin Lockwood - CTEBVI President
and Maureen Reardon - CTEBVI Vice President

EXHIBIT HALL OPEN..... 9:00 AM - 5:00 PM

Drop by the Exhibit Hall to browse the vendor booths and see all the desirable silent auction items.

NETWORKING LUNCHEON 12:30 PM - 1:45 PM

Take a break to refuel. Catch up with old friends or make new acquaintances. Compare notes on what you've seen and heard this morning.

SILENT AUCTION CLOSES.....4:45 PM

This is the last day for the Silent Auction so get your bids in before 4:45 pm so you don't miss out on some attractive deals! Any unclaimed items will go to the next highest bidder.

HOSPITALITY SUITE OPEN 8:00 PM - 11:00 PM

Location: Room 110

Keep the conversation going! Light snacks and beverages will be provided.

SUNDAY, APRIL 15

BUFFET BREAKFAST8:00 AM - 8:30 AM

Location: Salons 1, 2, & 3

GENERAL BUSINESS SESSION III WITH FAMILY PANEL DISCUSSION8:30 AM - 11:00 AM

Following a brief CTEBVI general meeting, a special parent-child panel will discuss their journeys through transitions. The transitions from pre-school to elementary and middle school, from middle to high school, from high school to college and careers, and finally that leap to employment and independence will be shared. You will not want to miss an opportunity to hear the parents and youth tell their stories. Our conference will conclude with the installation of our new board of directors and the passing of the gavel to our new CTEBVI President, Maureen Reardon.

YOUTH INSTITUTE

SATURDAY, APRIL 14

9:00 AM - 3:30 PM

Location: Suite E

Youth, ages 14-24, will spend the day at an institute during the conference geared especially for them. The Braille Institute and Wayfinder Family Service (formerly Junior Blind) are co-sponsoring this event with CTEBVI. Sessions will include advocacy, living skills, transition planning, assistive technology, and networking during interactive workshops. Each table will include a facilitator or two of young adults and/or youth staff successfully transitioning to college and/or careers. Part of the day will be in the Exhibit Hall learning about new technologies and other blindness supports. Following the institute the youth will continue to receive information pertinent to them and hopefully stay connected to the youth and leaders they networked with during their event.

PARENT INSTITUTE

SATURDAY, APRIL 14

9:00 AM - 3:30 PM

Location: Suite F

We all know how important the parent is in the success of the child in becoming an independent youth and then a working adult. California Association for Parents of Children with Visual Impairments (CAPVI) is co-sponsoring this first-ever event. This Parent Institute is a full day of sessions geared to provide support, information, and networking for parents of youth in transition. Learning from each other's successes and challenges, parents will be led through interactive sessions to build skills their children will need, as well as how to let go when the children are ready to be independent. The hope is that at the end of the institute the parents will continue to network throughout the year.



CONFERENCE MENU

BREAKFAST BUFFETS

- Freshly baked breakfast breads
- Freshly baked bagel assortment
- Fresh whole and cubed fruits
- Yogurt bar, quinoa, house made granola, fresh seasonal berries instead of individual yogurts
- Assorted Kellogg's cereals, skim and 2% milk
- Fluffy scrambled eggs with cheddar cheese and sliced scallions
- Brioche french toast with candied pecans, berry compote, and warm maple syrup
- Smoked bacon
- Chicken apple sausage
- Country style breakfast potatoes
- Chilled orange, cranberry, and grapefruit juice
- Freshly brewed premium coffee, decaffeinated coffee, and selection of teas

FRIDAY BANQUET

CHOICE OF:

Pan Seared Catch of the Day with a citrus beurre blanc

Chicken Florentine
stuffed breast of chicken with baby spinach, herbed ricotta and asiago cheeses with roasted tomato cream sauce

Vegetarian and Vegan options will be available

All entrées are served with fresh market vegetables and:

Classic Caesar Salad
crisp romaine tossed with aged parmesan, garlic croutons, radish, chives and creamy caesar dressing

Swiss Cheese Au Gratin potatoes

Red Velvet Marquis Cake
red velvet cake with cheesecake mousse

SATURDAY LUNCH BUFFET

- Romaine lettuce, olives, cucumbers, tomatoes, oregano feta cheese
- Mixed green salad, grape tomatoes, mozzarella, fresh basil, crostini
- Parmesan crusted chicken breast, asiago cream sauce
- Seared salmon, artichokes, blistered tomatoes, olives, basil clam sauce
- Penne pasta pomodoro, parmesan cheese
- Fresh seasonal vegetables
- Tiramisu and biscotti



Solutions for People with Visual Impairments

Phone: 818-893-5887; Fax: 818-698-8199

Web: www.sweetmansystems.com

Email: sue@sweetmansystems.com

In Southern California, we provide system integration, product installation, and customized configuration services for a wide range of adaptive hardware and software. We also provide training which is tailored to meet the needs of the user.

- Note Takers: BrailleNote Touch and BrailleSense Polaris. (Free training session with purchase of notetakers!)
- Digital Player/Recorders: Victor Reader Stream and Trek, Blaze ET and Blaze EZ
- Computer Systems: Desktop and laptop computers configured for visually impaired users
- Reading Systems and Software: Open Book, Kurzweil 1000, EyePal Reader, and SARA CE
- Global Positioning Systems: VictorReader Trek
- Refreshable Braille Displays: Focus, Brailiant, Braille Edge
- Screen Access Software: JAWS, MAGic, and ZoomText Fusion
- Braille Embossers
- Braille Translation Software: Duxbury Braille Translator
- Large Print Software: MAGic and ZoomText Fusion
- Video Magnifiers from Humanware, HIMS, and Freedom Scientific
- Training and worksite evaluations

WORKSHOP SCHEDULE

FRIDAY, APRIL 13

10:00 AM - 11:00 AM

101 (T) BRAILLE 2000: INCREASING PRODUCTIVITY

Presenter: *Amy Furman*

We will be going over some of the features of Braille 2000 that can help to speed up the process of braille transcription. Workshop includes both a short presentation, and a round-table discussion.

102 (T, E) MUSIC, BRAILLE, AND TECHNOLOGY: CONVERTING MUSIC FROM PRINT TO BRAILLE, AND MORE!

Presenter: *Michael Cheverie*

MusicXML and BMML (Braille Music Markup Language) are markup languages that allow the display of print and braille music notations on the internet. It is now possible to convert music in the MusicXML format into Braille music notation directly, and to emboss the result for use by blind musicians. Several open-source applications exist which allow musicians to analyze music for study as well.

103 (T) USING WORD TO GET YOUR DUX LINED UP

Presenter: *Gaeir Dietrich*

Whether adding structure to e-text, creating accessible documents, or preparing text to go into braille transcription programs, properly formatting your document in MSWord will save you time and effort. It's easier than you think! This session will show you how to utilize Word styles and formatting features. We will also learn to use the Duxbury Word Template to

After each workshop number there is (are) the strand(s) for whom the workshop is most likely to appeal.

T=Transcriber, E=Educator, P=Parent

make going from Word to Duxbury quick and easy.

104 (E) ENCOURAGING SPORTS, FITNESS, RECREATION, AND A HEALTHY LIFESTYLE

Presenter: *Eric Vasiliauskas (DrV)*

Come explore through pictures, video, story, and discussion how young visually impaired and totally blind children and teens can (and in fact DO) enjoy fun age-appropriate activities like surfing, skiing, snowboarding, rock-climbing, yoga, meditation, swimming, kayaking, paddleboarding, boogie boarding, rollerblading, bike riding, horseback riding, snow-shoeing, hiking, Frisbee, birthday parties, theme parks, water parks, and much more.

Suggestions will be presented on how to foster curiosity about and interest in these activities and how to find and/or create opportunities to pursue these. Specific resources will be provided; important considerations discussed; and illustrative real-life examples and "pearls of experience" will be shared.

Warning: While supervised children of all ages are encouraged to attend, be prepared for the consequences: they may very well ask you when they can try these activities too!

105 (E) GRAPH THIS!; YOUR STEP BY STEP TO CREATE VISUAL AND ACCESSIBLE GRAPHS ON THE BRAILLENOTE TOUCH PART 1

Presenters: Peter Tucic and Kevin Hughes

In this session attendees will be given step-by-step instructions on how to create visual and tactile accessible graphs using the BrailleNote Touch. The presenter will show a new “Tactile Preview” of the graph on his braille display in addition to showing the visual result and embossing the image. The final steps will demonstrate the “sharing” of the file.

106 (E, P) MAXIMIZING DOR RESOURCES TO INCREASE EMPLOYABILITY FOR STUDENTS WITH VISUAL IMPAIRMENTS PART 1

Presenters: Bennet Kim, Cathleen Coombs, and Susan Pelbath

The Rehabilitation Act allows DOR to enter into third party cooperative agreements to establish new, unique, expanded, or reconfigured patterns of service with a vocational focus. When WIOA was re-authorized in 2015, heightened emphasis was placed on the provision of transition services to students with disabilities ages 16–21, including “Pre-Employment Transition Services,” with the goal of meaningful training, work experience, and other services needed to achieve competitive integrated employment through collaboration with educational and community partners.

Learn how DOR is partnering with Local Education Agencies through various contracts to provide students with paid work experience and work readiness training.

107 (P) PARENTING A YOUNG CHILD WITH VISUAL IMPAIRMENTS OR BLINDNESS

Presenters: Jennifer Silvers, Molly Mills, and Kelly Chen

The purpose of this program will be to provide insights into the experience of parents of young child with VI or blindness. Three parents with children under the age of three will discuss their initial experiences from VI diagnosis to early intervention to planning for the future. Using an open format, we anticipate addressing a variety of issues that parents of VI children commonly face including supporting strong development, navigating typical environments for children (daycare, playgrounds, friends’ houses), and managing social situations with a child who might look or act differently from same-aged peers.

108 (E) PREPARING STUDENTS FOR GUIDE DOG MOBILITY: THE GUIDE DOGS FOR THE BLIND O&M IMMERSION PROGRAM

Presenter: Marc Gillard

In September 2016, a pilot program designed to assist students to gain O&M skills to prepare for guide dog mobility was launched. The program was a cooperative venture between Guide Dogs for the Blind and LightHouse for the Blind and Visually Impaired. A description of the program and the results of the pilot will be presented.

109 (E, P) PREPARING STUDENTS FOR WORK: CSB AND THE TPP

Presenters: Jonathan Waite and Nanako Yamada

Understand how California School for the Blind’s (CSB) Vocational Department and the Department of Rehabilitation’s support

WORKSHOP SCHEDULE

vocational training opportunities for students through the Transition Partner Plan (TPP).

Students experience a variety of on campus and off campus vocational experience and classroom instruction designed to facilitate their transition to post-school vocational opportunities.

110 (E) TEAMWORK: HOW TO BUILD AN EDUCATIONAL TEAM DESPITE BEING ITINERANT

Presenter: Terena Scott

How can itinerant teachers create an educational team in only one hour a week? How can teachers be a part of a classroom when people forget who they are? With communication and interaction with key players! This workshop will help itinerant teachers build partnerships with staff and parents to achieve a student's IEP goals.

111 (E) TECHNOLOGY FOR ACTIVE LEARNING OF STUDENTS WITH MULTIPLE DISABILITIES

Presenter: Yue-Ting (Ting) Siu

Students with multiple disabilities often require extra considerations to ensure meaningful learning and active participation. In addition to traditional accommodations, technology can be used to maximize students' engagement with peers in the classroom. This workshop will illustrate how technology can support students' independence in several types of functional and academic activities, including: communication, literacy, and presenting information to others.

112 (E, P) TRANSITION GUIDANCE TO A PROFESSIONAL JOB

Presenters: Jonn Paris-Salb and Linda Wyatt

Computer engineer? Designer? Chef? Musician? Physician? Comedian? You may not know what you want to be, but you have to be prepared for the future. Transition entails legal requirements, career awareness, and social skills. You also need to be emotionally prepared for independence. This interactive workshop will include steps, resources, and tools. Teachers guide, parents support, and students get to make decisions.

FRIDAY, APRIL 13 11:15 AM - 12:15 PM

201 (T) CARTOONS AND GRAPHIC NOVELS

Presenter: Cindi Laurent

More and more materials are being presented as graphic novels or in some type of cartoon-related format. This workshop will discuss the guidelines for handling these types of print materials in our braille transcribing. We will talk about appropriate transcriber's notes and knowing how best to describe what we are seeing. Come ready to share ideas and give your input.

202 (T) FROM BOOK TO COMPUTER: SCANNING AND OCR

Presenter: Gaeir Dietrich

Have you ever wondered if maybe creating e-text from hard copy material might speed up your transcribing job? Have you wanted to scan documents but been unsure how to go about it? Have you tried scanning but have been unhappy with the results? Do you run an

OCR program on what you've scanned and still spend hours editing? Do you copy and paste from PDF documents but figure there must be a better way? This workshop will answer all these questions and more. We will take you from the basics of scanning through running optical character recognition (OCR) and creating a text document that you can use with your transcription program.

203 (T, E) CDE/CSMT: YOUR RESOURCE FOR K–8 INSTRUCTIONAL MATERIALS FOR VISUALLY IMPAIRED STUDENTS.

Presenters: Cyndi Hammonds and Steven Parker

Representatives from the California Department of Education's Clearinghouse for Specialized Media and Technology (CSMT) Unit will be here to talk with you about the services and products they provide. They will discuss topics like how to navigate the Instructional Materials Ordering and Distribution System (IMODS), how to register to receive braille and large print textbooks and supplemental materials at no cost to you, as well as how to register your legally blind students and receive federal money to purchase products from the American Printing House for the Blind.

Information will be provided about methods of obtaining digital copies of products from CSMT and how to request books from the National Instructional Materials Access Center (NIMAC). Highlights and helpful information on using CSMT's online ordering system will be covered. There will be time for questions and answers, and applications will be available to sign up for CSMT resources.

204 (E) DESIRED RESULTS DEVELOPMENTAL PROFILE (2015): FROM OBSERVATION TO USING THE RESULTS

Presenters: Debbie Duplantis and Patricia Salcedo

The California Department of Education requires the DRDP (2015) for all infants and toddlers with Individual Family Service Plans (IFSPs), and preschool-age children with Individual Education Programs (IEPs) reported in the CDE's CASEMIS system. Participants will learn about the requirements for assessment of young children with IFSP's and IEP's with a brief overview of the use of Universal Design. The participants will interact with the measures of the DRDP (2015), review the adaptations, in small and large group formats, as they apply to young children with visual impairments, tools for observation and documentation, and reports for planning goals.

205 (E) GRAPH THIS!; YOUR STEP BY STEP TO CREATE VISUAL AND ACCESSIBLE GRAPHS ON THE BRAILLENOTE TOUCH PART 2

Presenters: Peter Tucic and Kevin Hughes

In this session attendees will be given step-by-step instructions on how to create visual and tactile accessible graphs using the BrailleNote Touch. The presenter will show a new "Tactile Preview" of the graph on his braille display in addition to showing the visual result and embossing the image. The final steps will demonstrate the "sharing" of the file.

WORKSHOP SCHEDULE

206 (E, P) MAXIMIZING DOR RESOURCES TO INCREASE EMPLOYABILITY FOR STUDENTS WITH VISUAL IMPAIRMENTS PART 2

Presenters: *Bennet Kim, Cathleen Coombs, Susan Pelbath, Ann Linville, Chris LeRoy, and Lela Rondeau*

The Rehabilitation Act allows DOR to enter into third party cooperative agreements to establish new, unique, expanded, or reconfigured patterns of service with a vocational focus. When WIOA was reauthorized in 2015, heightened emphasis was placed on the provision of transition services to students with disabilities ages 16–21, including “Pre-Employment Transition Services,” with the goal of meaningful training, work experience, and other services needed to achieve competitive integrated employment through collaboration with educational and community partners. Learn how DOR is partnering with Local Education Agencies through various contracts to provide students with paid work experience and work readiness training.

207 (E) MUSIC EDUCATION FOR ALL

Presenters: *Dalia Sakas*

Music educators are required to use digital software to earn their degrees. They already know how to teach a student to use braille, bits, bytes, print and audio techniques. Now teach them how to use the tools they have and get AT to make it hum.

208 (E, P) RESOURCES AT YOUR FINGERTIPS

Presenter: *Jonn Paris-Salb*

In this workshop you will find out about the many resources now available on the

CTEBVI website. These resources include a comprehensive list of organizations supporting people with vision impairments, vendors and products designed for those people who have vision challenges, and an update on the *Journal* and *To Be Continued* publications.

209 (E, P) THE IBRAILLE CHALLENGE

Presenters: *Cheryl Kamei Hannan, Sergio Oliva, and Judith Harris*

In this session, researchers will share about the iBraille Challenge (iBC) Mobile app pilot study. The iBC project is an OSEP funded Stepping Up Technology Implementation project. The project has been test piloted with over 50 students who are visually impaired and who read braille. Gains in technology and reading skills will be discussed. Future plans for scaling-up the iBC also will be shared

210 (E) USING DBT TO CONVERT BRAILLE MATH TO PRINTED MATH

Presenter: *Caryn Navy*

We will explore how to take a file with braille math, either a brf file produced on a notetaker or a dxb file, and use DBT to create inkprint math. We will cover several options, using Nemeth Code or UEB math in the original file and using Word with MathType or Scientific Viewer for producing the inkprint math.

211 (E) WHAT’S AVAILABLE IN ASSISTIVE TECHNOLOGY FOR STUDENTS WITH VISUAL IMPAIRMENTS

Presenters: *Adrian Amandi, Maria DiBernardo, and Alexandra Bezdikian*

Fortify your tech knowledge with this session packed with information about assistive

technology available to students with visual impairments! This presentation will target key arenas of technology that will benefit a variety of students of varying abilities, in addition to discussing strategies for use and best practice of implementation. Attendees that will benefit from this session include educational team members, students, family members, new and veteran teachers and service providers working with students with visual impairments. All participants will be provided an extensive resource outlining assistive technology resources in our field.

212 (T) TRANSCRIBING NEMETH CODE WITHIN UEB CONTEXT FOR THE DEVELOPING PROFESSIONALS

Presenter: Charles Mize
"Beyond the Walls"

This workshop will address various challenges for math textbook transcription created by the inclusion of Nemeth Code within UEB context according to the latest updates to the BANA guidelines. First, participants will determine when Nemeth switch indicators are needed by identifying the extent of the math expressions. Next, the participating transcribers will identify the location of the switch indicators that enclose this technical material. In addition, the attendees will explore a few oddities in the transcription of Nemeth Code on tactile graphics, in tables, and within foreign language glossaries. After identifying math expressions, locating the positioning of Nemeth Code switch indicators, and demonstrating the use of Nemeth Code within odd situations, the developing professional will be ready for future math textbook transcriptions!

FRIDAY, APRIL 13 **12:30 AM - 1:30 PM**

701 (E) ANNUAL MEETING OF THE SOUTHERN CA BIRTH TO FIVE VISION NETWORK AND NORTHERN CA CONSORTIUM OF INFANT AND PRESCHOOL VI TEACHERS

Coordinator: Mary Gaston

This workshop addresses of interest happening in California for Public and Non-public agencies which provide Early Intervention Services to children who are blind, deafblind or visually impaired through-out the state.

FRIDAY, APRIL 13 **2:00 PM - 3:00 PM**

301 (T, E, P) BRAILLE VOLUME GPS

Presenter: Cindy Olmstead, Kenneth Witherspoon, and Tommie Seymore
"Beyond the Walls"

Frustrated because you can't find it? We'll show you how to navigate through a braille volume for selected answers, extra practices, textbook-wide formulas, etc., as well as formatting.

302 (E, T) CREATING TACTILE GRAPHICS WITH THE APH TACTILE GRAPHIC IMAGE LIBRARY

Presenter: Sally Hart

During this workshop we will explore the Tactile Graphic Image Library (TGIL), created by the American Printing House for the Blind. Participants will learn how to create an account and maneuver through the library. We will cover why these templates are important,

WORKSHOP SCHEDULE

how to modify them for specific needs, and discuss how the library can be useful tool no matter the production method. This workshop will demonstrate how the use of the TGIL will help with your efficiency and accuracy when producing tactile graphics for textbooks, classroom activities or recreation.

303 (T) A DAY IN THE LIFE OF YOUR WORKSHEET (OR WHAT DO SCHOOL TRANSCRIBERS DO ALL DAY?)

Presenter: Marion Dawirs and Kelly Cokely

Parents and other educational staff may not be aware of the transcriber's alternate media process. This workshop will demonstrate techniques and tools that can be used to inform colleagues and supervisors about the workflow of the braille transcriber, and will offer suggestions to increase professionalism.

304 (P) 25 TECHNIQUES TO TRAIN YOUR TODDLER FOR FUTURE SUCCESS

Presenter: Sonja Biggs

The first few years of your child's life are vital in shaping their attitudes about the world around them. What can you do to help your child to develop a mindset of curiosity and exploration? Come learn about successful techniques and tools used by other parents that has led to their blind children becoming happy and productive members of society.

Techniques include:

- How to play games
 - Introducing the love of reading
 - Creating fun fieldtrips
 - Including your child in chores
 - Parenting techniques that are vital to a child's development.
-

305 (E) EXCEL ACADEMY: WIN-WIN FOR ECC

Presenter: Donald Ouimet, Cheryl Kamei-Hannan, and Parisa Lamarra

ExCEL Academy provides pre-service TVIs with the opportunity to develop experience with methodology for Expanded Core Curriculum with students. It also provides students who are visually impaired with ECC content that they would not otherwise receive. Session will describe the Academy and outcomes.

306 (E) EXPERIENCES OF DUAL MEDIA LEARNERS, THEIR PARENTS AND TVIS

Presenter: L. Penny Rosenblum

Students who are established print readers and later learn to read and write braille have unique experiences. The stories of dual media learners will be shared based on data collected through interviews with the triad: the dual media learner, the parent, and the TVI. The rich data gathered through these interviews shed light on instructional strategies, the role of motivation, and the importance of making learning meaningful. Time for discussion will be allocated.

307 (E, P) INDEPENDENT LIVING CENTERS 101

Presenter: Jacob Lesner-Buxton

This workshop will provide an overview of the mission and the services offered at California's 32 Independent Living Centers. For over 40 years these organizations have been assisting people with all types of disabilities to acquire services -- including finding housing, obtaining advocacy and learning about assistive technology. Come learn what roles Independent Living Centers can play in helping

your students become successful adults.

308 (E) JAWS VS. NVDA: THE ULTIMATE SHOWDOWN!

Presenter: Yurika Vu, Veronica Gunn, Scott Jaffray, and Vanessa Herndon

JAWS vs. NVDA? Are they equally accessible? Why should I pay for JAWS when NVDA is free? How are these screen readers different? Which is better? These are all questions TVIs, parents, and students ask. In this session, we will show you the similarities and differences between both screen readers and then both will enter the ring for...THE ULTIMATE SHOWDOWN!

309 (E, P) PREPARING YOUTH WITH VISION IMPAIRMENTS TO BE PROFESSIONALS IN THE 21ST CENTURY WORKFORCE PART 1

Presenter: Cathleen Coombs, Susan Pelbath, Christine Kae, and Bennet Kim

The unemployment rate for job seekers with vision impairments remains stubbornly and unacceptably high at 75%. This workshop will review the factors that contribute to this rate and will explore strategies to work with youth to prepare them to enter the workforce, obtain professional work with a career trajectory that will lead to promotional and executive opportunities, and achieve a lifetime of self-sufficiency using evidence-based practices. This will be a panel presentation including a Rehabilitation Counselors, Business Specialist, and Contract Specialist from Department of Rehabilitation and CaPROMISE staff from Los Angeles Unified School District.

310 (E) TIPS FOR GETTING THE MOST OUT OF YOUR BRAILLENOTE TOUCH

Presenter: Bob Sweetman and Damien Pickering

We will discuss the most popular topics requested by teachers during the past year of BrailleNote Touch training sessions that we have provided for schools. Look forward to learning:

- Setup considerations
 - Items to be discussed with IT prior to setup
 - Word processing, including headings and paragraph formatting
 - Printing and embossing, Using nested folders to manage classwork
 - Using Nemeth and the graphing calculator.
 - Creating a Spanish profile for reading and writing Spanish
 - Downloading books with GoRead and read them using on the Victor Reader program
-

311 (E) WHAT TRICKS ARE IN YOUR TRUNK?

Presenter: Sheryl Schmidt

Come share with other teachers: one, two or a trunk full of ideas that have made your life easier as a VI teacher. Do you have a go to website? Have you discovered a curriculum that saved you from reinventing the wheel? Bring your treasured idea(s) to share with others. Make connections with new and seasoned VI teachers collaborating to support their students and each other.

WORKSHOP SCHEDULE

FRIDAY, APRIL 13 **3:30 PM - 4:30 PM**

401 (E, T) BRAILLEBLASTER™: A NEW FREE BRAILLE TRANSLATION SOFTWARE FOR EVERYONE

Presenter: William Freeman

This session is designed to introduce participants to BrailleBlaster, a new FREE braille translation software that can be used by anyone. This software, created by APH will be useful to power textbook transcribers and casual braille creators alike. This new software was designed in accordance to BANA Guidelines, Braille Formats: Principles of Print to Braille, 2016, and is fully accessible. This session will give an overview of the software and will have a question and answer session to help you better understand this amazing new tool and how you can use it in your everyday life.

402 (T) LARGE PRINT SUPPORT GROUP

Presenter: Joan Treptow

The Large Print Support Group will reconvene as a group discussion of tips and techniques for quick production of large print materials for the classroom. Bring ideas to share and problems to brainstorm.

403 (T) TOOLS TO GLIDE THROUGH THE MAZE OF BRAILLE FORMATS 2016

Presenter: Kyle DeJute

404 (E) BY THE NUMBERS: NOTETAKERS AND MATHEMATICS

Presenter: Bob Sweetman

Both the BrailleSense Polaris and BrailleNote Touch have the ability to enter and display Nemeth and UEB math. They also both have the ability to produce and export graphs of equations. But the two notetakers have different approaches. In this workshop we will compare the methods used by the BrailleSense Polaris and the BrailleNote Touch.

405 (E) CHANGING TIMES: LEAD, FOLLOW, OR GET OUT OF THE WAY!

Presenter: Donald Ouimet and Allison Burdett

Significant changes to the funding, regulatory demands, and client/student needs have necessitated service delivery organizations to alter their missions, services offered, and the processes making this possible. This session will be an overview of the state of change within the vision field, the challenges that we will face collectively, and processes we can use to undertake the changes we need to make.

406 (E) HARNESSING THE POWER OF PARAPROFESSIONALS: BEST PRACTICES WORKING WITH STUDENTS WITH VISUAL IMPAIRMENTS

Presenter: Gabrielle Cohen and Adrian Amandi

Join us in a discussion of the role of paraprofessionals in the education of students with visual impairments. Paraprofessionals, whether one-to-one aides or classroom assistants, have a tremendous responsibility in helping our students become more independent and accomplished. It can be difficult to understand the line between helping students learn how to do a task or access information and doing too much for them. As a teacher it

is also tricky to facilitate a paraprofessional's duties and responsibilities. This workshop will discuss issues and differences in how children with visual impairments learn and the best practices associated with paraprofessional support.

407 (E) THE 3 Cs OF A DIGITAL WORKFLOW: CAPTURE! CONVERT! CLOUD!

Presenter: Yue-Ting (Ting) Siu

Capture! Convert! Cloud! We will discuss the importance of digital media to support the multisensory needs of students with visual impairments. Demos will include how to move from paper to digital formats, utilize online file sharing systems to provide immediate access to accessible materials, access distance work at the same time as peers, and digital workflows to maximize teachers' work efficiency. Bring a laptop or iPad and learn how various apps can be used to turn print materials into digital formats for flexible learning media

408 (E, P) SENSORY PLAY ACTIVITIES FOR CHILDREN

Presenter: Lisa Clavette and Kathy Schlimgen

Students with visual impairments rely on hearing, touch, body position and movement sensations for everyday activities. Normally these activities are directed by vision. Sensory enriched play activities can provide important feedback to visually impaired children that helps with learning, accessing their community and with social participation. Countless bits of sensory information enter our brain at every moment, not only from our eyes and ears, but also from every place in our body. Sensations

are food for the brain that provide energy and knowledge needed to direct our body and mind. Let's review simple, natural and stimulating sensory play activities that can be incorporated in everyday life which can enhance the quality of life for children with a visual impairment and their families.

409 (E, P) PREPARING YOUTH WITH VISION IMPAIRMENTS TO BE PROFESSIONALS IN THE 21ST CENTURY WORKFORCE PART 2

Presenter: Cathleen Coombs, Susan Pelbath, Christine Kae, and Bennet Kim

The unemployment rate for job seekers with vision impairments remains stubbornly and unacceptably high at 75%. This workshop will review the factors that contribute to this rate and will explore strategies to work with youth to prepare them to enter the workforce, obtain professional work with a career trajectory that will lead to promotional and executive opportunities, and achieve a lifetime of self-sufficiency using evidence-based practices. This will be a panel presentation including a Rehabilitation Counselors, Business Specialist, and Contract Specialist from Department of Rehabilitation and CaPROMISE staff from Los Angeles Unified School District.

410 (E, P) THE CRITICAL NATURE OF INCIDENTAL LEARNING

Presenter: Diana Dennis, Yolanda Gama-Moreno, and Michelle Foerch

It's believed that children who are blind or visually impaired are missing out on an estimated 80-85% of early learning that happens naturally through vision development. Without skillful intervention and parent education, these children are at the greatest

WORKSHOP SCHEDULE

risk of developing holes in their concept development and need systematic intervention and/ or remediation. We believe it's critical that parents, caregivers and early educators work together to fill the gaps. Come participate in this important discussion and learn key strategies to help parents and caregivers teach children in simple ways within their everyday lives. The workshop is designed to hand you ways to share how critical incidental learning is to a child's brain development and how crucial it is that intervention is thoughtful, early, and steadfast. Babies can't wait! We invite parents, caregivers and educators who are working with children in the birth to five range or those who feel like their children or students may have missed out on concept development in those early years and now need some strategies to help them fill the gaps in their concept knowledge. From this workshop you will come away with a thorough understanding of how experiential and active learning during early intervention can have the greatest impact on a visually impaired child's concept development.

411 (P) ADVOCATING FOR THE EXPANDED CORE CURRICULUM (ECC) IN THE IEP MEETING

Presenter: Christian Knox and Brenda Naimy

Are your children receiving specialized instruction in the expanded core curriculum (ECC) that they will need to become successful independent adults? In addition to the general education curriculum that all children receive, many students with visual impairments require additional specialized training in assistive technology, orientation and mobility, independent living skills, recreation and leisure, self-determination, self-efficiency, and social interaction skills. Learn your legal rights and how to advocate for appropriate services for

your child at an IEP meeting, from an attorney who specializes in education law and family rights and from an educator in the field of visual impairment.

412 (E) TOUCHING THE FUTURE - GRAPHITI

Presenter: Ken Perry, Jeanette Wicker, and Venkatesh Chari

Graphiti™ is a dynamic multilevel tactile display being developed by Orbit Research in partnership with the American Printing House for the Blind.

Graphiti allows students and adults to access on-screen graphics and image files in a wide variety of popular formats. The device allows users access to graphical content from stored files such as textbooks, maps, and charts as well as graphical content from computers, mobile devices, and the internet in real-time.

SATURDAY, APRIL 14 **10:00 AM - 11:00 AM**

501 (T) UEB BASICS

Presenter: Amy Furman

We will be going over some of the basics of UEB and how this differs from the EBAE code. We will also go over some of the problem areas in switching from the EBAE code to the UEB code.

502 (T) SUGGESTED PRACTICES FOR MATHEMATICAL BRAILLE PRODUCTION

CANCELLED

503 (E, T) DEVELOPING COLLABORATION WITH EDUCATORS AND TRANSCRIBERS

Presenter: *Ellen Hoke and John Romeo*

Question-guided discussion between TVIs and braille transcribers addressing how to serve students with visual impairments. A highlighted goal is to develop collaboration to increase proficiency and success in serving students.

504 (E) AN UNUSUAL EYE CONDITION LEADS TO IMPORTANT LESSONS FOR ANY SURGERY AND RECOVERY

Presenter: *Joy Efron*

A macular hole and a macular pseudohole are unusual conditions experienced primarily by seniors. Surgery is complex and recovery is challenging. AFB's VisionAware.org site has many articles leading to successful visual recovery. Generic lessons and practical solutions will be shared relating to researching and setting goals; selection of a surgeon; assertive but respectful questioning of a doctor; what the patient and family can do to maximize outcomes: challenges with insurance reimbursement; preparation and organization for any surgery: equipment and resources, precautions, expectations and possible complications.

505 (E) BEACH CLUB: SURFING THROUGH THE EXPANDED CORE CURRICULUM

Presenter: *Lisa Okikawa and Jamie Murdy*

As busy TVIs and O&Ms, we struggle with never having enough time, particularly when it comes to how to regularly incorporating the ECC into our student's already busy day. We created the B.E.A.C.H. (Braille Enthusiasts After School Community Happenings) Club in our SELPA in response to this ongoing question. We currently

meet once a month and work on daily living skills, technology and social skills with our students in the community and at school. This workshop will give attendees an opportunity to learn about creative ways to implement the ECC in our jobs.

506 (E) ACTIVE LEARNING FOR LEARNERS WITH MULTIPLE DISABILITIES PART 1

Presenter: *Lori Enroth and Diana Dennis*

Active Learning is an educational approach, by Dr. Lilli Nielsen, for learners (0-48 months developmentally) with multiple disabilities. EVERYONE CAN LEARN: The essential principle is to create interesting and responsive environments that give feedback and support to learners so that they can take action on their own initiative to learn. This workshop will focus on a budget friendly approach and will include pertinent information on assessment, curriculum, equipment, and educational strategies.

507 (E, P) DEVELOPING VISUALLY IMPAIRED YOUTH AS RISING PROFESSIONALS: THE STUDENT PERSPECTIVE

Presenter: *Ann Wai-Yee Kwong, Karen Arcos, Kevin Tuan-Huynh Phung, and Nadia Paola Arteaga*

The Department of Education found only 30% of individuals with vision loss graduated from high school in 1987. This disheartening statistic reflects society's negative bias toward blind/low vision students becoming rising young professionals. To support students holistically, we recommend: strengthening the relationships of students, families, and educators; refining advocacy skills; and increasing understanding

WORKSHOP SCHEDULE

of accommodations. Furthermore, creating a collaborative environment which facilitates awareness and ownership will ensure more students enter the workforce or pursue post-secondary education.

Survive or Thrive, co-founded by and for students with disabilities, empowers, educates, and builds awareness in a culturally-responsive manner to unite the disability community and their families in maximizing potential.

508 (E) EAT THAT FROG

Presenter: Ramona Mclaughlin

Improve your professional skills when you learn techniques and strategies to help you stop procrastinating and get more of the important stuff done. Want to move your career forward? Find out how to rank your to-do's and refine the art of purposeful procrastination. Successful people satisfy their need for organization at the same time they create more time to do the things they love. You can do it, too!

509 (E) JAWS 2018 – NEW FEATURES AND TIPS TO OPTIMIZE PRODUCTIVITY FOR STUDENTS

Presenter: Bob Sweetman

JAWS 2018 – New Features and Tips to Optimize Productivity for Students

We will discuss new features in JAWS 2018 and productivity tips. We will cover:

- Updated Vocalizer Expressive voices.
- Using Convenient OCR to scan and read print documents or pdf files.
- Using JAWS with a refreshable Braille display to encourage greater literacy.
- Getting the most out of the Research It

feature.

- Demonstration of ZoomText Fusion that combines JAWS and Zoomtext for students with low vision.

510 (E, T) LATEX AND MATHML: MATHEMATICAL DOCUMENTS AND WEBPAGES FOR BRAILLE READERS

Presenter: Michael Cheverie

LaTeX, a typesetting application, and MathML, a markup language for display of mathematics on the internet, can be used to make mathematics accessible to braille readers. Recent developments in technology have made using LaTeX and MathML easier than ever. These developments include direct conversion of LaTeX mathematics expressions into Nemeth, conversion of mathematics expressions handwritten on Android and iPad tablets into LaTeX, and use of accessible equation editors by blind mathematics students.

511 (E) ASSISTIVE TECHNOLOGY IN THE CLASSROOM? HELP!?!

Presenter: Veronica Gunn, Yurika Vu, Vanessa Herndon, and Scott Jaffray

Let's address the daunting task of teaching assistive technology in the classroom! Where do I start and how can I get my students to where they need to be? This session will include how to infuse technology into standard classroom lesson plans, support technology use, and promote student independence. We will also discuss progressions to advance your students through various types of technology based on their changing needs.

SATURDAY, APRIL 14 **11:30 AM - 12:30 PM**

601 (T) HANDS ON BRAILLE

Presenter: *Delores Billman and Kimberly Martin*

“Beyond the Walls”

Join us and the Mountain View Braille Transcribers as we venture from the beginning to the end of the braille world through our interactive and extremely informative worksheets! We will explore the transcription of multiple worksheets in various codes. We will answer some of those commonly asked questions that may stump you in your adventure to teaching, learning, or transcribing braille.

602 (T) SHOULD THIS BE UNCONTRACTED?

Presenter: *Cindi Laurent*

This workshop will focus on Spelling Lists, Activities and other Exercise Material. We will discuss when contractions are used and when they are not. Learning to spell is an integral part of developing professionals, and transcribing these types of materials correctly will play a big part in the learning experience of those who read our materials.

603 (E, T) TMAP 2.0 – TACTILE MAPS AUTOMATED PRODUCTION

Presenter: *Greg Kehret, Naomi Rosenberg, and Jerry Kuns*

TMAP 2.0 is a web-based app for rapid production of tactile street maps of any location in the US. We will discuss the significant implications for education, orientation, and mobility of blind and visually impaired travelers, key takeaways being: TMAP as an aid for

teaching tactile literacy, the ease with which TMAP can enter curriculum, and the ease with which TMAP's are generated.

604 (E, P) HELP! I CAN'T READ MY CHILD'S BRAILLE HOMEWORK

Presenter: *Kim Blackwell*

This workshop will introduce parents, caregivers, and those who work with braille reading students to the fundamentals of the UEB braille code, through brief descriptions, reference sheets and interactive practice. It demonstrates how to use the online Schoology platform to access “Into to Braille” from the convenience of home.

605 (E) FIGURING OUT TECHNOLOGY'S ROLE IN ACCESSING MODERN ACADEMICS

Presenter: *Adrian Amandi*

Students who are on an academic track are finding themselves confronted with curricula that expects use of technology in the classroom and at home. Often multiple types of technology are needed for a student to complete work as assigned and it's typically up to students, their TVI, and their parents to figure out the dance steps necessary to learn it all. Sometimes there is too much on the table and sometimes there is not enough. This presentation will discuss the conundrums and pathways to be successful in integrating technology.

606 (E) ACTIVE LEARNING FOR LEARNERS WITH MULTIPLE DISABILITIES PART 2

Presenter: *Lori Enroth and Diana Dennis*

Active Learning is an educational approach, by Dr. Lilli Nielsen, for learners (0-48 months

WORKSHOP SCHEDULE

developmentally) with multiple disabilities. **EVERYONE CAN LEARN:** The essential principle is to create interesting and responsive environments that give feedback and support to learners so that they can take action on their own initiative to learn. This workshop will focus on a budget friendly approach and will include pertinent information on assessment, curriculum, equipment, and educational strategies.

607 (E, P) INCLUSIVE LEARNING THROUGH EXERCISES AND GAMES

Presenter: Tristan Pierce

Through exploration, interaction, and active movement, attendees will learn innovative ways to provide toddlers with literacy learning, motor development, direction and space training, manual dexterity skills, tactile pattern identification. This session highlights games and exercises using the Reach and Match Learning Program from Australia. The session celebrates braille and describes essential skills for children with visual and multiple impairments, including autism. This workshop demonstrates how a social inclusive tool is fun for all.

608 (E) INCORPORATING 3D PRINTED MATERIALS AT ALL LEVELS AND ABILITIES

Presenter: Leslie Edmonds and Neal McKenzie

3D materials designed and created in-house will be shared. Materials range from manipulatives for academic students, to braille games, to materials designed in conjunction with other specialists. The entire process from creating materials, to design, to students using them in the classroom will be discussed.

Bring your ideas or materials you have created to share with the group! 3D printing resources will be shared as well.

609 (E) PHILOSOPHY FOR KIDS: USING THE SOCRATIC METHOD TO PROMOTE LISTENING SKILLS, CRITICAL THINKING, AND RESPECTFUL DIALOGUE

Presenter: Joe Gutcher

Philosophy is our oldest field of study, but is the only one not formally taught in public schools; this is despite the fact the much of it aligns naturally with Common Core Standards. Come learn the reasoning, research, and practical examples you can use to make philosophy accessible to your students with visual impairments. Sample lesson plans and resources will be provided.

610 (E) WHAT'S IN YOUR ASSESSMENT KIT?

Presenter: Anna Orellana and Susan Walker

Assessments are important to help determine eligibility and provide information on any vision-related needs. We will share components of the various kits we use to assess a variety of students including those in general education settings as well as students with additional disabilities. We will also have available sample protocols and reports.

SATURDAY, APRIL 14 **2:00 PM - 3:00 PM**

801 (T) KEEPING UP WITH THE CHANGING GUIDELINES

Presenter: Cindi Laurent

This workshop will discuss changes made in the Braille Formats Guidelines after its initial release last year. The updated files are available now and we will use examples and discussion to review the latest files and ensure understanding of these changes.

802 (T) TIPS AND TECHNIQUES FOR CREATING QUALITY TACTILE GRAPHICS

Presenter: Yan Zhang

The goal of this workshop is to promote excellence in the design and production of tactile graphics. We will explore the specialties of tactile reading, basic components of tactile graphics, and the application of good design principles. In this workshop we will focus on the key elements of a quality tactile graphic. You will learn tips and techniques on how to choose the best design, layout, adjustments, and avoid pitfalls to provide the most meaningful and readable tactile graphics in different production methods.

804 (E) A DAY IN THE LIFE OF A BRAILLENOTE TOUCH STUDENT

Presenter: Taylor Cox and Peter Tucic

This workshop will discuss how a braille student uses her BrailleNote Touch throughout her day for school and her social life. Taylor Cox, a ninth-grade student, along with Peter Tucic from HumanWare, will explain and demonstrate how a student can use a touch in various classes,

such as math, English, and science. They will demonstrate certain apps such as Google docs and drive, calendar, and social media apps that Taylor uses for independence in high school.

805 (E) BRIDGING STUDENTS FOR SUCCESS

Presenter: Debbie Picon, Meliza Vera Cruz, and Evelyn Pate

The Bridge program is an exciting new program that teaches students independent living skills in a whole new way. Come learn how our students are encouraged to participate and provide input and direction in how they are to accomplish both group and personal goals with the help and guidance of residential and educational staff. Our program goes beyond just teaching living skills. Bridge helps transition students to a group or apartment living settings. A combination of independent living skills and community exploration and experiences bridges our students to a world of opportunities.

806 (E) BUILDING GRAPHICS LITERACY SKILLS OF YOUTH WITH VISUAL IMPAIRMENTS

Presenter: L. Penny Rosenblum

The AnimalWatch Vi: Building Graphics Literacy project is field testing materials to build the graphic literacy skills of students at the 5th-7th grade math level. Come see our TVI curriculum, accessible graphics, and iPad app and learn about our preliminary results. You and your students can be part of our 2018-2019 study! We'll also show our AnimalWatch Vi Suite iPad app and materials now available for FREE!

WORKSHOP SCHEDULE

807 (E, T) INTERACTIVE TACTILE GRAPHICS IN PREK-12 EDUCATION

CANCELLED

808 (E) PARTNERSHIP PROGRAM FOR STUDENTS WITH SENSORY IMPAIRMENTS

Presenter: Danielle Cummings

The partnership program, a model of multiple districts agreeing to have their students with significant hearing or vision loss leave their district to attend a specified school at another district, opened the possibility for another level of services on the Arizona State Schools for the Deaf and Blind (ASDB) continuum. With this model, services are offered at a designated school campus and receive itinerant services from a trained professional. Although some students may have to travel a little longer to get to school, the children get the benefit of being surrounded by grade-level peers while receiving quality special education services at one location.

This model is an answer to current teacher shortages and budget difficulties. Creative thinking and discussion in this area has led us to a new program.

809 (E, P) REAL-TIME, REAL-WORLD BRAILLE

Presenter: Jennifer Dunnam

Discussion and demonstration of practical ways that braille is used in 2018, from the novel (reading movie subtitles as they display on-screen) to the time-honored (writing research papers or labeling medicines). Covers some of the outstanding features and the varying limitations of the many ways of generating and interacting with real-time braille. Contends that with the proliferation of technologies, the

need for fluency in reading and writing braille becomes more important rather than less so.

810 (E, P) TREATMENTS FOR EYE DISEASES THAT CAUSE LOW VISION

Presenter: Bill Takeshita

This workshop will describe some of the current clinical trials to treat blindness and low vision. The topics that will be discussed include gene therapy, stem cell treatments, neurological surgical intervention, and the latest in low vision aids.

SATURDAY, APRIL 14 3:30 PM - 4:30 PM

901 (T) A REFINED TOUCH OF TACTILE

Presenter: Tammy Nixon and Guy Toles
"Beyond the Walls"

The Refined Touch of Tactile workshop presenters including the Mountain View Braille Transcribers will showcase the tactile creations methods for three complex, out of the ordinary tactile graphics. A companion book will focus on tactile rules that tend to be overlooked for a clearer overall understanding of tactile creation.

902 (T) USING DBT TO PRODUCE BRAILLE MATH AS NEMETH CODE IN UEB CONTEXT

Presenter: Caryn Navy

We will look at the tools DBT 12.2 provides for producing braille that follows the rules for Nemeth Code in UEB context. Our exploration including editing in DBT; editing in Microsoft Word together with MathType, the BANA Braille 2017 template, and Duxbury's SWIFT 5.01 Word add-in; and working with LaTeX files. We

will learn how to get the start and end Nemeth indicators where they belong in the braille and avoid getting them in other places.

903 (T) WHAT'S NEW IN CERTIFICATION FOR TRANSCRIBERS AND PROOFREADERS

Presenter: Jennifer Dunnam

Covers the latest information about the process of obtaining Library of Congress certification for braille transcribers and proofreaders. Discussion of frequently asked questions.

904 (E) ALL WORK AND NO PLAY MAKES LIFE TOO DULL!

Presenter: Damien Pickering

Life's too short to work all the time. But don't worry, we've got ya covered. BrailleSense Polaris is there for you when work is necessary, but it can also be the center of your entertainment universe. We'll look at the Google Suite of services such as Drive, Docs, and Classroom so that you won't miss any deadlines, but we'll also show how easy it is to Cast Polaris to your stereo, smart TV or other Smart Home appliances, and we'll show you a few of our favorite apps from the Play Store.

906 (E) DOWN ON THE MATT; EXPLORING THE ALL PURPOSE PRODIGI MATT CONNECT

Presenter: Kevin Hughes and Andy Roberts

The Prodigy MATT Connect has been a very useful classroom and home use alternative to the traditional CCTV for the low vision student. This session will guide the educators and users on how to get the most out of your

MATT Connect. HumanWare has pre-installed educational specific apps for the MATT Connect. We will take a look at these along with basic Prodigy functions. We will be prepared to answer your questions on all things Prodigy MATT Connect.

907 (E) EVERYTHING AFTER THE DIAGNOSIS: INTERVENTION AND COLLABORATION THAT MAKES THE MOST OF AN EYE EXAM

Presenter: Tori Schladen, Diane Christian, and Judith Harris

Partners for Pediatric Vision works alongside low vision optometrists in order provide support and guidance to families of children with visual impairments. We will discuss the importance of an accurate visual diagnosis from eye doctors who can make recommendations that will advance intervention. Discussion will include the benefit of a team approach focused on best practices for students with visual impairment amongst professionals with a variety of backgrounds and examples of how an early and accurate diagnosis and a team approach can make critical differences in the development of a child and the emotional well-being of family members.

908 (E, P) IEP VS. 504 PLAN; WHAT'S THE DIFFERENCE?

Presenter: Maureen Reardon and Yue-Ting (Ting) Siu

Parents are now being offered 504 plans instead of IEPs. What's the difference? Does it matter? This workshop will review the differences between 504 plans and IEPs, and provide students, parents and educators an opportunity to review the rights of students with

WORKSHOP SCHEDULE

exceptional needs, to discuss their concerns, and to increase their knowledge of special education law.

909 (E) THE MAGIC ART OF STORYTELLING

Presenter: Cheryl Kamei-Hannan and Ya-Chih Chang

Experience the magic of oral storytelling! In this session, presenters will demonstrate methods that will bring children's literature alive through the use of music, props, and activation of the

senses. Presenters will provide attendees with strategies for adapting children's literature to incorporate oral traditions. Presenters also will discuss ways to integrate story telling into literacy lessons. An emphasis will be placed on building language, vocabulary, and comprehension through the art of storytelling. Attendees, please bring a sleep shade and be prepared to experience a truly multi-sensory experience!

SILENT AUCTION DONATIONS

Jayma Hawkins, APH:

Tactile Algebra Tiles

Roberta Becker, Actual Tactuals:

UEB Practice Books

Sharon Sacks:

Picnic Basket, Red Champagne and chocolate truffle basket, and Gourmet cupcake basket

Christine Wallterstein, Playopolis Toys:

Hand dyed silk scarves

Judi Biller, CTEBVI:

California Welcome gift cup and gift items

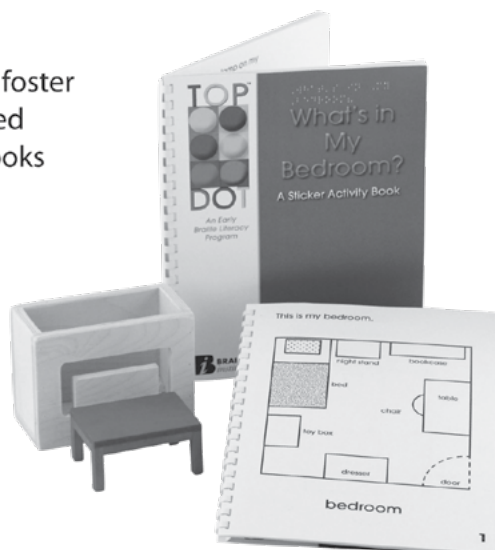
Maureen Reardon, CTEBVI:

Sparkling wine basket with flutes and nuts

FREE BOOKS from Braille Institute for Braille Readers, Parents and Teachers!

Special Collection is a national program of Braille Institute designed to increase braille literacy and foster a love of reading by providing blind and visually impaired children, parents, TVIs, or educators with FREE braille books and storybook kits throughout the year.

- Encourage braille literacy and tactile skills with multi-sensory storybook kits
- Build your child's/classroom library
- Enjoy recreational reading with popular titles
- Introducing **Digital Dots** — young adult titles available for download onto a portable braille device!



TO SUBSCRIBE:

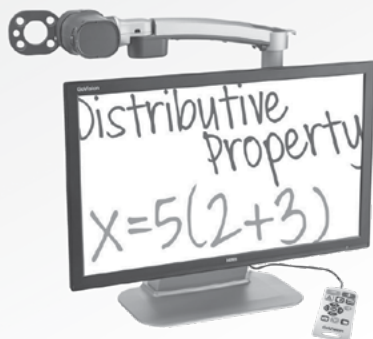
• Call: (323) 210-2550 • E-mail: SpecialCollection@brailleinstitute.org • Visit: SpecialCollection.org

SIGN UP NOW to receive the Special Collection Catalog!

GoVision Pro

Transportable Magnifier for Near/Far

- Full Page OCR with Speech
- Near, Self and Distance viewing
- 360° Camera Rotation
- Save files on USB Drive
- Document Viewer: Word, PDF, TXT
- Easy-to-use Remote



Connects with...



BrailleSense Polaris Mini

Google-certified Braille Tablet

- Ultra sleek
- Upgradable Android OS
- Math editing in word processor
- DAISY-Reader/Media-player
- 13 MP Camera for OCR
- Personal & professional productivity



Connects with...



HIMS
Lifestyle Innovation

Call 888-520-4467 for a FREE Demonstration!
Or visit www.hims-inc.com to Learn More

PRESENTERS

A

ADRIAN AMANDI

**California School for the Blind,
Director of the California Education
Resource Center for the Blind and Visually
Impaired**



Adrian has a multitude of experiences ranging from coordinating the Assistive Technology Center at CSB to in-home infant services at BCLC. He has worked in self-contained

classrooms and itinerant settings, and is presently working at CSB to provide consultation, assessment, and technical assistance, without cost, to the entire state of California through the Education Resource Center.

KAREN ARCOS

University of California, Irvine, Ph.D. student

Karen is a PhD student in Psychology with a concentration in Cognitive Neuroscience at the University of California, Irvine. She currently researches short-term memory differences between sighted and unsighted individuals. Karen graduated from the University of Southern California with a BA in Psychology and a Spanish minor in 2015. She is also a totally blind braille reader and white cane user. You can find her reading mysteries, baking, and hiking during her free time. Additionally, Karen co-founded Survive or Thrive, an experience-based support group and mentoring program in Southern California by and for youth with disabilities and their families. She feels that parents and students need guidance about possibilities after high school and need to learn from the experiences of others with disabilities. Throughout her high school education, she was in two worlds: one was very supportive in encouraging her to pursue her undergraduate degree at a four-year university, and the other thought doing so was too difficult. She,

personally, would like to change what people with disabilities expect of themselves and what society expects of them.

NADIA PAOLA ARTEAGA

Cal State Los Angeles, Student: Liberal Arts major and Psychology minor

Nadia is a totally blind college student. She is a braille reader and white cane user. She was also diagnosed with scoliosis and osteoporosis. This made doing a lot of physical activities very difficult for her. She is currently a third year transfer student at Cal State LA and is majoring in Liberal Studies and minoring in Psychology. She is hoping to become either a teacher for the visually impaired or a child psychologist. She is one of the co-founding members of Survive Or Thrive, an experience-based support group and mentoring program in southern California by and for youth with disabilities and their families. This support group is important to her because she wants to give students and their families a chance to have an easier time getting through high school and college than she did. She and her parents didn't know all of the resources that were out available after high school. If they had, she might have taken a different path in life. She also wants to make sure that parents are as involved in their children's education as possible because she noticed that as the child grows up, the educational system often disregards the parents in the decision-making process. So she wants to make sure that the needs of the student as well as the needs of the parents are equally met.

B

ALEXANDRA BEZDIKIAN

**California School for the Blind, Life
Skills Classroom Teacher**

Alexandra is a teacher for Students with Visual Impairments at the California School for the Blind.

SONJA BIGGS

**PhD Education, Certification Courses for Special Education, TVI/COMS
California State Education Specialist Visual Impairments, California Rehabilitation Specialist for Orientation & Mobility;
Sonja Biggs Educational Services, Inc.,
Founder/CEO**

Children who have visual impairments and who have visual impairments with other disabilities hold a special place in Sonja's heart. Her eldest son was born blind with Leber's Congenital Amaurosis (LCA). As a result, she became a Teacher of the Blind and Visually Impaired and an Orientation & Mobility Specialist. Sonja was already an elementary teacher when she discovered her son was blind. Going through the gamut of emotions associated with having a child with a visual impairment provides her with special insight into the needs of children and parents. She holds a PhD in Advanced K-12 Teaching through Capella University and a Masters degree in School Counseling and Guidance. Sonja is also the founder of Sonja Biggs Educational Services, Inc, a company that contracts out all the components of a top quality VI program to counties, districts, and charter schools.

DELORES BILLMAN

Literary and Nemeth Certifications; Texas Department of Criminal Justice – Mountain View Braille Facility Plant Manager

Mrs. Billman is the Plant Manger at the Mountain View Braille Facility. She has both Literary and Nemeth Certifications. She has worked in the correction field for 40 years. She has been studying braille and teaching for approximately 20 years at the Mountain View Braille Facility.

KIM BLACKWELL



**Education Specialist
Instruction Credential
(Teacher for the Visually Impaired), Multiple Subject
BCLAD Teaching Credential,**

**Master of Arts in Teaching Reading,
Specialist Instruction Credential (Reading);
Escondido Union School District Teacher for
the Visually Impaired**

Kim is a reading Specialist and Teacher for the Visually Impaired, large print and tactual braille reader, and a curriculum writer for iBraille Challenge.

ALLISON BURDETT



**BS in Kinesiology and an MA
in Special Education; Junior
Blind Senior Director of
Programs**

Allison has worked in the field of disability services for 10 years and currently serves as Senior Director of Programs at Junior Blind. Ms. Burdett oversees Junior Blind's adult rehabilitation and training programs, the Special Education School, and the Group Homes program. Ms. Burdett holds a BS in Kinesiology and an MA in Special Education. She is certified through ACVREP as an Orientation & Mobility Specialist. She is currently the President of the Southern California AER chapter.



YA-CHIH CHANG

PhD; California State University, Los Angeles, Assistant Professor

Ya-Chih Chang is an Assistant Professor at California State University, Los Angeles. Dr. Chang earned her Doctorate of Philosophy at the University of California, Los Angeles (UCLA) with an emphasis in intervention for children

PRESENTERS

with autism spectrum disorders. Dr. Chang has worked with children with autism for over ten years. She has extensive experience in training and collaborating with interventionists, parents, and teachers in evidence-based practices. Dr. Chang's research agenda is focused on social communication interventions for young children with autism, teacher preparation, and parent training. Her most recent publications include co-authored peer-reviewed articles in *Journal of Child Psychology and Psychiatry*, *Journal of Clinical Child and Adolescent Psychology*, *Journal of Autism and Developmental Disorders*, and *Autism*, that focused on community partnered interventions for young children with autism and minimally verbal children with autism.

VENKATESH CHARI

MSEE; Orbit Research President and CTO

Venkatesh is President and CTO of Orbit Research, an organization whose mission is to develop breakthrough technologies to create innovative and affordable products for people who are blind and visually impaired. He is currently leading a project to develop and manufacture the world's first affordable refreshable braille display, the Orbit Reader 20. This project, in partnership with the Transforming Braille Group, an international consortium of blindness organizations, aims to bring literacy to the tens of millions of blind children and adults around the world through affordable access to electronic braille. He is also leading the development of an affordable interactive tactile graphic display in partnership with the American Printing House for the Blind. This groundbreaking device enables blind people to visualize graphical content from computers, mobile devices and the internet in real-time. With a background in Electrical Engineering, Venkatesh has worked for over 20 years in the development of products

involving mobile and assistive technologies, in roles spanning engineering, management and strategic marketing. His previous work has included the development of the Orion TI-84 Plus, the world's first handheld talking graphing calculator, and the iBill, a talking money identifier which is being distributed to all blind and visually impaired residents by the US Department of Treasury through their Meaningful Access program.

KELLY CHEN

Kelly is a mother to a visually impaired two-year-old son.

MICHAEL CHEVERIE

BS Physics and Economics, UCLA; Single Subject Teaching Credential, authorizations: Physical Science, Social Science, Mathematics; Educational Specialist Instruction Credential, Level II; Los Angeles Unified School District Educational Specialist, Visual Impairments

Michael has been teaching for over 35 years in the Los Angeles area and for over 20 years in the Los Angeles Unified School District. After acquiring a Bachelor of Science degree in physics and economics at UCLA, and doing some graduate work in physics, he began his teaching career as a teacher of Advanced Placement Physics and Calculus at Fairfax High School in West Hollywood. Later, he became the Coordinator of the California Demonstration Center of Mathematics location at Pacoima Middle School in the San Fernando Valley, as well as chair of the mathematics department at Pacoima Middle School. Mr. Cheverie's experience also includes private educational consulting, including work as a traveling teacher with the actresses Mary-Kate and Ashley Olsen. He now teaches blind and low-vision students at the Valley Academy of Arts and

CURRICULUM VITAE

Sciences in Granada Hills, California. Some of his areas of interest include use of 3D printing to illustrate concepts in mathematics and the sciences, making mathematics accessible to blind students through the use of MathML and LaTeX, and using microcontroller-based data collection devices to make the sciences more accessible to blind students. Mr. Cheverie is also passionate about helping his visually impaired students learn to code.

DIANE CHRISTIAN

**PhD, Developmental Psychology;
Partners for Pediatric Vision
Administrative Consultant**

Diane has worked with children and adults with different types of disabilities for 30 years with an emphasis on those with visual impairments for the past 15 years. She currently maintains Partners for Pediatric Vision databases, assists with grant support, oversees evaluation program, and interfaces with families for follow up calls.

LISA CLAVETTE

Occupational Therapist OTR/L (Licensed and Board Certified); works for LAUSD; Consultant/Assessor for Nurturing Tots (Vendor for the North Valley Regional Center Early Intervention Program); Consultant for Club Twenty One Learning and Resource Center

Lisa is originally from Canada and worked for 10 years as an Occupational Therapist in Canada in both a Pediatric clinic and for a school district. Since she moved 12 years ago to the Los Angeles area, she has been working as a School Based Occupational Therapist for LAUSD and the Infant Program (VI and DHH programs). She has been consulting and assessing for the North Valley Regional Center, Early Intervention Program for 12 years. She

uses different modalities such as Sensory Integration, NDT, RTI when intervening with children with special needs in their natural environments. Lisa strongly believes in parent education and using an inter-disciplinary approach with different specialists when working with children with special needs! Her motto is, "Together is Better!"

JOSHUA COFFEE

BSE, Mechanical Engineering, University of Vermont; President/CEO E.A.S.Y. LLC

GABRIELLE COHEN



MA, TVI, O&M; California School for the Blind, Assessment Center O&M and TVI

Gabrielle has worked in the field of visual impairment for 24 years, most of them at the California School for the Blind on the Assessment Center Team.

KELLY COKELY

Certified Braille Transcriber, working in a school district for 14 years, Anaheim Elementary School District

Kelly worked for many years in insurance and business, but after developing a friendship with a visually impaired person, became interested in braille and embarked on an entirely new career path. Kelly has now been transcribing braille for 19 years (and boy are her arms tired! Haha!). She works in an elementary school classroom, and enjoys the daily interaction she has with both students and teachers. She hopes that sharing some of her experience in both business and education can help others develop ideas for continuing to build professionalism in the field of visual impairment.

PRESENTERS

MICHAEL COLEMAN

PhD, Theoretical and Applied Mechanics, Cornell University; Vice-President Engineering, E.A.S.Y. LLC

Mike holds a PhD in Theoretical and Applied Mechanics from Cornell, awarded in 1998, and served on the UVM engineering faculty from 2002 through 2015. He has applied this background to product development at E.A.S.Y. LLC, through his knowledge of the dynamics of human movement. Complementing his engineering expertise is his professional devotion to the application of drawing in pedagogy and his personal skills in the visual arts and photography. At E.A.S.Y. he has drafted a primer on drawing fundamentals for blind and low-vision children which will be evaluated this summer in selected NFB BELL Academies.

CATHLEEN COOMBS

MS, Rehabilitation Counseling, Certified Rehabilitation Counselor; Department of Rehabilitation, Vocational Rehabilitation Counselor

Cathleen is a Vocational Rehabilitation Counselor with 29 years of experience working with various populations of people with disabilities, including youth, particularly those with vision impairments and those with developmental and intellectual disabilities. She has served as a Program Manager for a community-based adult program providing training and support in the community and at work. For the last 12 years she has been a Rehabilitation Counselor for California State Department of Rehabilitation, primarily as a counselor for blind and visually impaired youth and adults. During her tenure with DOR she has served as an advocate to improve outreach and services to youth with vision impairments, facilitating the California Transition Council and working on several transition projects

statewide, and presenting at several transition conferences.

TAYLOR COX



Student, Huntington Beach High School

Taylor is a ninth-grade student in Huntington Beach. She enjoys listening to music, playing piano, singing, and, of course, technology. She uses many pieces of technology throughout her school day, including the BrailleNote Touch.

DANIELLE CUMMINGS

MA, TVI; Supervisor, Arizona State Schools for the Deaf and Blind

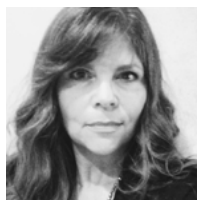
Danielle began working as an itinerant Teacher of students with Visual Impairments (TVI) for the North Central Regional Cooperative of Arizona State Schools for the Deaf and Blind in 2013. She received her Bachelor's degree in Mathematics and Biology from Oakland University in Michigan and began her career as a high school math teacher. She received her Master's Degree in Special Education with emphasis in Visual Impairments in December 2014. She recently began supervising for the NCR cooperative and has TVIs and Teachers of the Deaf/ Hard of Hearing on her team. She has two sons, both with foveal hypoplasia, which originally got her interested in this field.

D

MARION DAWIRS

Graduate of UC Irvine, a decade as an Instructional Assistant for students with Visual Impairments; certified Braille Transcriber, Anaheim Union High School District

Marion has worked in the field of education for students with visual impairments for twelve



years. In the last three years she has filled the role of Braille Transcriber at a middle school and has developed tools to acquaint school staff with her role in providing students equal access to educational materials.

KYLE DEJUTE

Braille Trainer at the American Printing House for the Blind

Kyle is a braille transcriber certified in UEB, Braille Formats, and Nemeth Code. She has a passion for the study and use of braille code books and a weakness for silly jokes. As a Braille Trainer at APH, she supports braille trainees as they work through the NLS Instruction Manual for Braille Transcribing; she tutors transcribers who are working toward continuing certifications; she creates and presents trainings on software, agency specifications, and braille codes; and she replies to braille-related questions from across the company. Kyle is also a member of the board of the National Braille Association, where she serves as chair of the Nemeth Code Committee and as the elected member to the Executive Committee

DIANA DENNIS



MA, Special Education (ECSE); ECSE Credential; and TBVI Credential, Valleydale Elementary School Education Specialist/Teacher of the Blind and Visually Impaired

Diana has been in the field of early intervention for more than 20 years. Ms. Dennis holds an MA in Special Education from San Francisco State University with an emphasis on Early Childhood Special Education. In addition, she holds an Education Specialist Credential in both

Visual Impairments and Early Intervention. Ms. Dennis began her career in visual impairments while working with children and families as a Home Counselor with Blind Babies Foundation in Northern CA. In addition, she's worked as a Vision Impairment Specialist for Santa Clara County Office of Education and as the Director of Children's Programs at TLC for the Blind in Reseda, CA where she started an inclusive early intervention and preschool program for children who are blind or visually impaired with additional disabilities. Ms. Dennis is currently an Education Specialist for Azusa Unified School District and continues to consult with various programs throughout Southern CA.

MARIA DIBERNARDO

Mainstream High School Program Teacher, California School for the Blind

Being in the education field in all realms has provided Maria a scope of knowledge with varying abilities of students of all ages. She cherishes and embraces the vision department as she is also a parent of a daughter who is totally blind.

GAEIR DIETRICH



High Tech Center Training Unit (HTCTU) Director

Gaeir is the director of the High Tech Center Training Unit (HTCTU) of the California community colleges, and the systemwide trainer for Section 508 compliance. Gaeir has served on the advisory boards for AHEAD, Bookshare, DIAGRAM Center, the Alternate Text Production Center (ATPC), and the Silicon Valley Independent Living Center (SVILC). In 2010-2011, she served as the chair for the national Advisory Commission on Accessible Instructional Materials (AIM) in Postsecondary Education. She is a contributing

PRESENTERS

author to *Beyond the Americans with Disabilities Act*, published by NASPA.

JENNIFER DUNNAM



Library of Congress certification in braille transcribing (with Letter of Proficiency life-time braille user in UEB); Manager of Braille Programs, National

Federation of the Blind; Chair, Braille Authority of North America

Jennifer has more than twenty-five years of experience with braille instruction and production. Blind herself, she is a certified braille transcriber and also uses braille every day. For eleven years she has served as the Manager of Braille Programs for the National Federation of the Blind Jernigan Institute. Under a contract with NLS, she coordinates the administration of courses for persons seeking certification in braille transcribing and proofreading. She is the author of [The Slate Book: A Guide to the Slate and Stylus](#). She serves on the board of the Braille Authority of North America (BANA) and currently serves as its chair.

DEBBIE DUPLANTIS

MEd; State of California, Special Education Division - Desired Results Access Project (Napa County Office of Education) Training Coordinator

Debbie has worked in the field of Early Intervention, birth through preschool, as an Early Childhood Special Educator and Teacher of the Deaf/Hard of Hearing. She supported the development of the DRDP (2015) in the pilot phase of design. Debbie is currently the Training Coordinator for the Desired Results Access Project, sharing her knowledge of rating

the measures with confidence, understanding the use of adaptations, through observation and documentation.



LESLIE EDMONDS

Masters in Special Education, Assistive Technology Professional; Sonoma County Office of Education Teacher of the Visually Impaired

JOY EFRON



EdD in Educational Administration; lifetime credentials in blindness and visual impairments, deaf and hard of hearing, deafblind, elementary education, community college, administration and supervision, special education; retired from Los Angeles Unified School District; retired principal of Frances Blend School and coordinator of LAUSD districtwide Visually Impaired Program

Dr. Joy Efron retired in 2004 after 42 years of service as a teacher, administrator, university professor and advocate in the field of blindness and visual impairments, including work with persons who are deafblind and those who have multiple disabilities. Throughout her career, she has been a staunch defender of the need for a full continuum of services and access to information for people with vision and hearing disabilities. She has 20 articles published in VisionAware.org on the topics of Macular Holes and Macular Pseudoholes.

LORI ENROTH



Active Learning Advocate and Trainer; BS in Communication; LilliWorks Active Learning Foundation Education Outreach Coordinator and National Board Member

Lori has been an Active Learning advocate since 2004, and a board member and the Education Outreach Coordinator for LilliWorks Active Learning Foundation since 2005. She learned of the approach from ROPARD and Penrickton Center for the Blind in 2003 and shortly after obtained two conference certificates by Dr. Lilli Nielsen. Her journey began as a parent trying to reach her son and blossomed into a mission to responsibly sharing the principles and philosophy of Active Learning. Lori has been the director of many Active Learning workshops and conferences throughout Southern California for the past 12 years. She coordinates with the local, national and international Active Learning advocates and educators to provide the most current, safe and accurate information on the approach. She volunteers her time and resources to training educators, therapists and families.

F MICHELLE FOERCH

BA, Education Specialist, Teacher of the Blind and Visually Impaired, MA, Special Education; Azusa Unified School District Education Specialist/Teacher of the Blind and Visually Impaired

Michelle spent the first part of her career working in General Education as an elementary school teacher, and then went back to school to expand on her career where she obtained an Education Specialist Credential in Visual Impairment and a masters in Special Education, focusing on the field of blindness and visual impairments. Michelle currently

works as an itinerant Teacher of the Blind and Visually Impaired with Azusa USD. Michelle covers a wide territory and provides services to elementary, middle and high school aged students with various abilities.

WILLIAM FREEMAN

Certified Braille Transcriber; American Printing House for the Blind Quality Control Analyst and Certified Braille Transcriber

William is a graduate of Berea College with a degree in English Writing. He began his career at the American Printing House for the Blind (APH) as a braille transcriber. He is an NLS Certified Transcriber and also has NBA Formats Certification. Through his position as a transcriber he was one of the first testers of BrailleBlaster before eventually becoming a tester for all APH technology products. His knowledge and love of braille has given him a unique perspective in his approach to software testing and has helped ensure that APH software is accessible to those that require braille.

AMY FURMAN

LOC Certified in Literary Braille and Proofreading, UEB Online Certificates; Hope Braille, Reno, NV, Owner

Amy began her career as a school transcriber. She held that position for five years, before moving into an independent contractor position. She has been specialized in higher-level math and sciences for the last nine years. She is experienced in the Nemeth Code, UEB with embedded Nemeth, and UEB Technical codes. Throughout her 14 year career, she has worked in all grades from K-12 up through college. She is excited to be a part of CTEBVI, and hopes to utilize her vast experience in the industry to be a resource for other transcribers.

PRESENTERS

G YOLANDA GAMA-MORENO

BA, Psychology; MA Special Education, Early Childhood Special Education; Multiple Disability Service Executive Director

Yolanda is the founder and director of Multiple Disability Service (MDS), an early intervention program in Southern California. Yolanda obtained her BA in Psychology in Mexico City and then came to the United States where she began working in the field of Special Education. She started her work in the field of visual impairments while working as an Education Specialist with Junior Blind of America (JBA). During her time at JBA she went back to school to obtain her MA in Early Childhood Special Education. Yolanda is dedicated to working with children with multiple disabilities and regularly collaborates with other programs in the US and abroad, including programs in Mexico and India.

MARY GASTON

SOUTHERN CA BIRTH TO FIVE VISION NETWORK, PRESIDENT AND TVI FOR SANTA BARBARA UNIFIED SCHOOL DISTRICT

MARC GILLARD



BSc, (Forest Science), Graduate Diploma, (O&M), Licensed Guide Dog Instructor; Guide Dogs for the Blind, Orientation and Mobility Services Manager

Marc has worked in the fields of O&M and guide dog instruction for over 25 years in the USA and Australia. Currently he is the O&M Services Manager at Guide Dogs for the Blind tasked with developing and directing educational program strategies focused on guide dog readiness service provision at GDB and other agencies.

VERONICA GUNN

MA, TVI; California School for the Blind, Assistive Technology Specialist

Veronica received her Master's degree in Special Education with a concentration in visual impairments from San Francisco State University. She has worked at the California School for the Blind since 2004. Currently, she is an assistive technology specialist at the California School for the Blind.

JOE GUTCHER



MA Special Education, BA Philosophy; Kern County Superintendent of Schools, TVI/O&M

Joe is a Teacher for the Visually Impaired and Orientation &

Mobility Instructor working in the Central Valley of California. He has experience with all ages, and has worked in both urban and rural environments. He loves philosophy, and believes most of his students do as well when it is presented appropriately.

H CYNDI HAMMONDS

BA, Business Administration with a Minor in Computer Science; Information Systems Analyst



Cyndi has implemented and managed large software projects in addition to providing technical support for the past 28 years with seven years spent in elementary education. She is

currently the primary support contact for the California Department of Education's Instructional Material Ordering and Distribution System (IMODS) and the Clearinghouse for Specialized Media and Technology (CSMT).

JUDITH HARRIS

BS Child Development; Partners for Pediatric Vision, Family Specialist

Judith has been a Family Specialist at PPV since 2012 when she retired from Junior Blind after 23 years as a Infant Family Specialist and Associate Director. Judith has extensive training in deafblindness through participation in three federally funded studies. Her commitment to children with visual impairment and their families spans decades.

SALLY HART

NLS Literary Certified; American Printing House for the Blind, Tactile Graphic Designer

Sally is a Tactile Graphic Designer in the Accessible Tests and Textbooks Department at the American Printing House for the Blind. She is currently the administrator of APH's Tactile Graphic Image Library (TGIL), a free library of tactile graphic templates for transcribers, teachers and parents. Sally is a NLS Certified Braille Transcriber and has numerous years of experience transcribing tests, textbooks, and other educational materials. Her interest in quality tactile graphic design grew as she reviewed thousands of graphics from transcribers across the country and found inconsistencies that could easily be avoided with training and tools.

VANESSA HERNDON

BA; California School for the Blind, Assistive Technology Teacher

Vanessa is completing her TVI credential and MA in Special Education at San Francisco State University. She has worked at the California School for the Blind since 2014, initially as a teacher with transition age students. (2014-2017) She currently works at the California School for the Blind supporting students and

teachers to infuse assistive technology in their academic and daily lives.

ELLEN HOKE

Clear Visual Impairment Credential and MA in Special Education; Teacher of Students with Visual Impairments

Ellen is a teacher of students with visually impairments teaching throughout multiple districts in Northern California. She is an itinerant teacher for students who are deafblind, have multiple disabilities, and/or are academic braille readers. Additionally, Ellen completes independent assessments, provides consultation to districts and provides personnel to districts to teach and transcribe materials for students with visual impairments. Ellen also serves as vice president on the board of Volunteers of Vacaville. Ellen is dedicated to facilitating success within special and general education settings for students with IEP who have visual impairments.

KEVIN HUGHES

BA; West Region Manager at HumanWare

Kevin has 15 years of low vision and braille assistive technology experience while employed at HumanWare. Kevin is responsible for the customer support and training resources of HumanWare technologies throughout his territory. This includes on site workshops as well as the coordination of web based support.



SCOTT JAFFRAY

MA, COMS; California School for the Blind, Assistive Technology Specialist

Scott received his Master's degree in Orientation & Mobility from California State University Los Angeles and has served children and adults with visual impairments since 2010. He currently works at the California School for the Blind as an Assistive Technology Specialist

PRESENTERS

and previously worked at the Western Blind Rehabilitation Center in Palo Alto as an O&M Specialist, Computer Access Technology Specialist, and Computer Access Technology Supervisor, as well as serving as an itinerant O&M Specialist in Tuolumne and Calaveras counties.

K CHRISTINE KAE

**LCSW; CaPROMISE Specialist,
Division of Special Education, Los Angeles
Unified School District**

Life begins and ends with hopes and dreams. Christine Kae, LCSW is passionate about students and families reaching their potential through healing and determination. After earning her Masters in Social Work from the University of Southern California, she joined the K-12 education to fulfill her passion. As a Los Angeles Unified School District Pupil Services Counselor in the Southeast Los Angeles area, she worked through barriers and daily challenges along with her students and their families. Within a few years, she focused her work with probation and foster youth – increasing awareness, connecting community partners and engaging with the transition process to post-secondary options. Currently Christine serves as the CaPROMISE LEA manager for LAUSD; linking the school district with key partners including the Department of Rehabilitation, Department of Public Social Services, Independent Living Centers and participating districts to increase post-secondary outcomes for young adults with disabilities. She is committed to working with students achieve their hopes and dreams.

CHERYL KAMEI-HANNAN

**MA, Special Education, PhD, Visual
Impairment and Blindness; California State
University Los Angeles, Professor**
Cheryl Kamei-Hannan, PhD, is a professor

at CSULA. Dr. Kamei-Hannan earned her Doctorate of Philosophy at the University of Arizona with a specialization in Visual Impairment and an emphasis in Language, Reading, and Culture. She also studied at San Francisco State University and earned her Master of Arts degree in Special Education with an Education Specialist Credential in Visual Impairment and Blindness and a Rehabilitation Services Credential in Orientation & Mobility. Dr. Kamei-Hannan has worked in the field of visual impairment and blindness in California and Arizona for over fifteen years in the capacity of personnel preparation coordinator, reading specialist, middle school language arts classroom teacher, itinerant teacher of the visually impaired, and a resource room teacher. Dr. Kamei-Hannan's research agenda is focused on literacy issues with students who are visually impaired and the use of assistive technology to support access to the general education curriculum. Her most recent publications include a co-authored book about reading, *Reading Connections: Strategies for Teaching Students with Visual Impairments* and co-edited *Foundations of Education*. She also is the principal investigator and lead coordinator of the iBraille Challenge Mobile App, an interactive literacy assessment and intervention for students who read in braille.

GREG KEHRET

**BA, Music Performance; LightHouse for the
Blind and Visually Impaired, Director, Media
and Accessible Design Lab (MAD Lab)**

Greg has witnessed the evolution of the LightHouse's alternative media capabilities from his fledgling days as Program Coordinator of Broadcast Services for the Blind to his current position as Director of the Media and Accessible Design Laboratory (MAD Lab) where the focus is on producing world-class tactile graphics and 3D educational objects for the blindness

community. Greg recently accepted a 2016 MTC Excellence in Motion Award on behalf of the MAD Lab for their pioneering development of Accessible BART Station maps to improve mobility for blind and visually impaired transit riders.

BENNET KIM

MS, Rehabilitation Counseling; Certified Rehabilitation Counselor; Department of Rehabilitation, Contract Specialist/Administrator

Bennet is a Contract Administrator who completed a Master of Science in Rehabilitation Counseling at California State University, Fresno (CSUF) and has also obtained various certificates funded by the Rehabilitation Services Administration (RSA) including: Certificate of Achievement from the Rehabilitation Research Institute for Underrepresented Populations, Certificate of Completion for Deafblind and Certificate in the course of study as a Vision Specialist. Her years of experience as a Contract Administrator, Rehabilitation Specialist, Rehabilitation Supervisor, and Senior Vocational Rehabilitation Counselor (QRP) at the Department of Rehabilitation have given her an opportunity to formulate, develop, and implement departmental policies in order to provide, improve, and expand vocational rehabilitation services including academic planning for consumers. This has also given her an opportunity to explore inadequacy of systems and/or policies for people with disabilities and to modify those systems and policies for the better based on limited resources in order to empower individuals with special needs and allow for enhancement of various administrative functions and skills.

CHRISTIAN KNOX

JD, BS; Ruderman & Knox, LLP, Attorney/ Partner

Ms. Knox brings over 20 years of experience in working with special needs children and practicing law. Previously, Ms. Knox served as a Special Education Hearing Officer and traveled throughout the State of California conducting administrative hearings and issuing decisions. Ms. Knox has extensive experience with abused and neglected children and previously served as a staff attorney with Sacramento Child Advocates, representing children in all areas of law including education and emancipation. During her tenure with the Fourth Judicial District Court in Elko, Nevada, Ms. Knox served as Teen Court Judge, presiding over the first-time offender program. In 2001, Ms. Knox received the Women's Role Model of the Year Award from the Attorney General for the State of Nevada for her work with children in the foster care system. In 1993, Ms. Knox received her Juris Doctor from Western State University College of Law, where she served as a tutor for disabled students. Ms. Knox completed extensive undergraduate work in music therapy at Long Beach State University and holds a Bachelor's degree in law.

JERRY KUNS



MS, Counseling Psychology, California Teaching and Counseling credentials (various); LightHouse for the Blind and Visually Impaired, Board of Directors;

Technology Specialist (retired)

As a Technology Specialist at the California School for the Blind, Jerry taught the use of information management hardware and software tools for people who are visually impaired. He has held a variety of jobs in

PRESENTERS

rehabilitation and employment development serving people who are blind or visually impaired. He has also held various positions in management and sales in firms providing technology equipment and software to people with vision impairments, and has consulted with employers in affirmative action, reasonable accommodation, and adaptive equipment for employment of people with special needs. Jerry is devoting time on the LightHouse Board “to ensure the continuance of appropriate services and programmatic content to further the potential of living effectively with vision loss.”

ANN WAI-YEE KWONG



BA, Psychology, Minor Education; University of California, Santa Barbara, PhD Student

Ann is a PhD student in the education program with the emphasis of Special Education, Disabilities, and Risk Studies at the University of California, Santa Barbara. She received her BA in Psychology and a minor in Education from UC Berkeley as a Gates Millennium scholar. Prior to her attendance at UC Santa Barbara, she worked as an education technician intern in Washington, DC disaggregating student suicidality data and analyzing its negative impact on both student and school excellence. Ann testified at the US Senate hearing in 2014 to advocate for herself and others, informing policy makers of the attitudinal and tangible societal barriers which limit the potentials of people with disabilities. Her research interests include: creation of innovative workforce development curriculum for transition age youth with disabilities, self-determination, and cultural implications of professional and family partnerships. She is currently collaborating with UCP Work, Inc. on designing and implementing

curricula to increase competitive integrated employment for individuals with disabilities and their families; she recently concluded a project with the Institute for Educational Leadership (IEL) on implications of cultural reciprocity with the implementation of the Workforce Innovation and Opportunity Act and pre-employment transition services. In addition, Ann co-founded Survive or Thrive where she designs and facilitates workshops as well as mentors youth with disabilities and their families. In a professional capacity, she also serves on various boards including the California Department of Rehabilitation’s Advisory Committee and the Association on Higher Education and Disability. Through her research and advocacy, Ann hopes to continue empowering others to envision, define, and achieve their future aspirations.



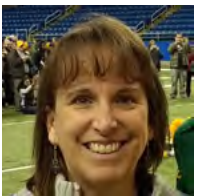
PARISA LAMARRA

BA and MA in Journalism, Credential in Visual Impairment; California State University, Los Angeles Professor

Parisa B. Lamarra, Professor at California State University, Los Angeles, is a credentialed Teacher for the Visually Impaired with expertise in providing quality instruction to a wide range of students with visual impairments and various disabilities (cerebral palsy, autism, hard of hearing, traumatic brain injury, cortical vision impairment, developmental disabilities and other disabilities) from ages birth to 22. She has developed an infant program for the Los Angeles County Offices of Education that focuses on a holistic approach to helping families navigate the IFSP process in addition to providing resources and individualized instruction in the least restrictive environment for infants from birth to three years of age. She works with older students with visual impairments to ensure they have equal access

to the curriculum and can independently utilize whatever technology and learning media best helps them succeed. Teaching focused on applying VI specific principles to train future TVIs on how to best serve the VI population in the assessment courses, eye anatomy course as well as the newly piloted directed teaching course. She is a member of the Birth to Five Vision Network and has served on the Braille Institute Review Board Committee. Parisa assisted in re-writing California Program Guidelines for Students Who Are Visually Impaired. She consulted on building the first app of its kind for iOS devices that allows a user with a visual impairment to pair the device with a braille display and play literacy games on an iPad.

CINDI LAURENT



Certified in Literary, Textbook, Nemeth and UEB; National Braille Association President-Elect

Cindi has been literary certified since 1997. She is the

Coordinator for Volunteer Braille Services in Golden Valley, Minnesota. Over the last 20 years, Cindi has been involved with the National Braille Association and the Braille Authority of North America. She currently serves as the chair of both the BANA Formats Committee and the NBA Formats Committee. Braille is her addiction and she loves being able to share her knowledge and experience with others in the braille field.

JACOB LESNER-BUXTON



MSW; Independent Living Resource Center, Community Organizer

Jacob is a person with cerebral

palsy and low vision who is a community organizer at an Independent Living center in Santa Barbara. In his job, Jacob helps communities on the central coast advocate for disability rights. Jacob also enjoys writing articles, doing yoga, travel, and going to movies.

ANN M. LINVILLE

Director of Transition, California School for the Blind

CHRIS LEROY

BA, Religious Studies, MA, Special Education; Transition Services, San Bernardino City Unified School District

Chris is in his 44th year in education. He graduated Phi Beta Kappa with a BA in Religious Studies from University of California, Riverside, and has a MA in Special Education from California State University, San Bernardino. As a special education teacher, he piloted the first integrated class for students with moderate severe needs in San Bernardino City USD, which was selected as a California State Exemplary Program in 1987. First as a Program Specialist, and now as Transition Services Program Manager he supports families and guides students to plan and train for successful adult lives. He is currently WorkAbility State Advisory Chair and serves as Adjunct Faculty for special education at CSUSB. He co-authored THE BASICS, a widely used student skills framework published by Lakeshore. Currently, he is focusing on enhancing WORC (Working On Real Careers) a community and university college 18-22 year program. In his other life, Chris is a musician-songwriter, film score composer with songs in films (Empire Records), television (Sons of Anarchy), albums and video games

PRESENTERS

M KIMBERLY MARTIN

Literary, Formats, and Nemeth; AMAC Accessibility - Georgia Institute of Technology, Braille Media Specialist II
Kimberly began at AMAC Accessibility in 2017 where she currently serves as a Braille Media Specialist I. Her day-to-day responsibilities range from transcribing, creating tactiles, proofreading, and braille production to communicating with customers to ensure she understands their needs. Kim has her literary, formats and Nemeth Certifications and hopes to work on earning a proofreading certificate next. She has been involved in some capacity with multiple prison braille programs for several years including a stint teaching braille.

NEAL MCKENZIE

Assistive Technology Professional, Sonoma County Office of Education

Neal is an Assistive Technology Professional specializing in technology design to assist students with visual impairments.

AMANDA MCKERRACHER

PhD, School Psychologist, Licensed Educational Psychologist, CSB Assessment Center Psychologist

Amanda McKerracher, PhD, has been a school psychologist for six years; currently, she is the Assessment Center Psychologist at the California School for the Blind. Amanda has published and presented extensively on the cognition, development, and academic achievement of children with visual impairments.

RAMONA MCLAUGHLIN



MA, Education; Corona Norco USD, TVI

Ramona formerly worked at the Employment Development Department where she participated in the Director's

Disability Advisory Panel. Currently she works at CNUSD as a TVI.

MOLLY MILLS

Molly Mills is mother to a visually impaired six-month-old daughter.

CHARLES MIZE

Certifications in Braille Formatting, Nemeth Mathematics Transcribing, Literary Proofreading, and Letter of Proficiency in UEB; Georgia Braille Transcribers, Lead Transcriber

Charles is a trainer and lead transcriber for the Georgia Braille Transcribers in Macon, Georgia. He began his braille studies in November 2007. Mr. Mize is certified in literary braille (EBAE and UEB), literary braille proofreading, textbook formatting (1997 and 2011), and mathematics braille. He considers his specialty to be the Nemeth Code although he is well versed in tactile graphics. He authored a tactile graphic training manual, Introduction to Mathematical Diagrams, which is used by Central Georgia Technical College as an On-the-Job (OJT) certification course.

JAMIE MURDY

COMS, TVI West Orange County Consortium for Special Education, Teacher of Students with Visual Impairments

Jamie is a Teacher of the Visually Impaired and Orientation & Mobility Specialist in Huntington

CURRICULUM VITAE

Beach. She has been teaching students with visual impairments for the past eight years. Prior to that, she worked for Sendero Group where she worked with Accessible GPS and other technology for the blind and visually impaired. She received her Bachelor's degree from UC Davis and her Masters in Orientation & Mobility from San Francisco State University.

N BRENDA NAIMY

MA, COMS; California State University, Los Angeles Program Faculty

Brenda has been an Orientation and Mobility Specialist for over 30 years, working with adults and children with visual impairments, including those with multiple disabilities. For the last 24 years, she has taught at California State University, Los Angeles, teaching prospective candidates in the field of Orientation & Mobility. She also serves as an appeals specialist with Access Paratransit Services, assessing individuals who have been determined ineligible (or received restricted eligibility) for the Los Angeles County ADA paratransit services provider.

CARYN NAVY

PhD, Mathematics; Duxbury Systems, Inc., Senior Technical Staff

Caryn grew up using braille for math from elementary school through graduate school and teaching math to sighted students. At Duxbury Systems she has worked on developing and supporting tools in DBT related to braille math, as well as those in MegaDots. She is currently a consultant to the BANA Technical Math Committee.

TAMMY NIXON

Literary Braille Certification; Texas Department of Criminal Justice - Mountain View Braille Facility Assistant Plant Manager

Mrs. Nixon is the Assistant Plant Manager at the Mountain View Braille Facility. She has her Literary Certification and has been the UEB Literary Short Course Instructor for the past nine years. She has worked in the correction field for over 20 years.

O LISA OKIKAWA

MA, Special Education, TVI; West Orange County Consortium for Special Education, Teacher of Students with Visual Impairments



Lisa is currently a teacher of students with visual impairments for the West Orange County Consortium for Special Education in Huntington Beach, CA and serves on the CTEBVI

board. Lisa is an advocate of performing arts education for students who are blind and visually impaired. She received a Broadway League Apple Educator Award and is the recipient of grants from Center Theatre Group (LA) and the National Education Association in which she researched literacy-based theatre education for students with visual impairments. Lisa's article, Putting It Together: Musical Theatre & Literacy for Children with Visual Impairments was published in the *Journal of Visual Impairment & Blindness* (2012). Prior to her career in education, Lisa worked as a Publicist for NBC Universal and E! Networks. She is a graduate of the University of California, Santa Barbara (BA in Theatre); California State University, Los Angeles (MA in Special Education/ Visual Impairment). In fulfillment of her Master's degree, she assisted in the development of an APH efficacy study of a reading intervention program for students who read braille and completed her thesis entitled, "An Examination of Attitudes and Experiences Related to the Development of Literacy for Braille Readers." Twitter: @okikokee

PRESENTERS

SERGIO OLIVA

**MPA; Braille Institute of America, Inc.,
Director of National Programs and Youth
Services**

Sergio is the Director of National Programs and Youth Services for the Braille Institute of America, Inc. (BIA). Sergio manages the growth and development of programs that currently go beyond BIA's Southern California service area, including The Braille Challenge, Special Collections, Cane Quest and Vision Connect. Sergio has a strong program development background, having worked at several agencies that provide mentoring programs for at risk youth. His overall experience includes administration and reporting on grant funded projects, development of program policy and procedure manuals, building efficient teams, strategic planning, and identifying and measuring program outcomes. Sergio earned his Bachelor of Arts in Sociology with a minor in Education and Public Policy from UC Berkeley, and a Master of Public Administration from Cornell University.

CINDY OLMSTEAD

**Michigan Braille Transcribing Fund,
President/CEO**

ANNA ORELLANA

**MEd, Visual Impairment; Lancaster School
District, Teacher for the Visually Impaired**

Anna has been a TVI since 1999; she started with LAUSD as an itinerant teacher and became a part of the assessment team for LAUSD a couple of years after she started. She also acted as Program Specialist for the LAUSD VI program before moving to the Antelope Valley SELPA in 2006 where she now supports a variety of students as a TVI.

DONALD OUIMET



**BS, Education, MEd in Special
Education, and Certificate in
Visual Impairment; Junior
Blind, Chief Program Officer**

With 40 years of experience
educating children who are

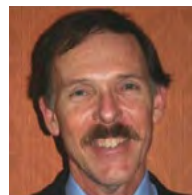
visually impaired and multidisabled, Don currently serves as Junior Blind's Chief Program Officer. He currently serves on the Boards of AER (Southern California Chapter) and CTEBVI. Prior to joining Junior Blind, Mr. Ouimet was the Director of Oregon School for the Blind, as well as a teacher, program coordinator, and administrator at Maryland School for the Blind. He has a MEd in Special Education and completed his vision training at Pennsylvania College of Optometry.

P

JOHN PARIS-SALB

**BA, Theater Arts; MS, Education
Administration, standard teaching**

**credential, and administrative
credential.**



John has been an educator for over 40 years, accessibility expert, and advocate for youth with disabilities.

STEVEN PARKER

Associate Governmental Program Analyst

Steven has been with the Clearinghouse for Specialized Media and Technology (CSMT) for 17 years and has worked extensively with the Large Print program and the American Printing House for the Blind federal quota program. He has spent the past 10 years managing the large print program and answering customer inquiries.

EVELYN PATE



Masters Degree and enrolled in PhD program; California School for the Blind, Supervisor for Residential Program

Evelyn has worked 25+ years in Residential with students and staff. She has launched a Bridge Program with other administrators and staff. Her love, compassion and enthusiasm for working with students and staff have given her much joy and fulfillment in her life; that she likes giving back to others.

SUSAN PELBATH

MS, CRC; Orientation Center for the Blind, Assistant Administrator

Sue has a Master's Degree in Rehabilitation Counseling and a graduate specialization certificate in Rehabilitation Technology. She has over 15 years experience in high school special education and is currently the Assistant Administrator at the Department of Rehabilitation's Orientation Center for the Blind.

KEN PERRY

BS, Computer Science Software Engineering, certifications in Electronics and Digital Communications; American Printing House for the Blind, Software Engineer Project Leader

Ken has worked in his current position at the American Printing House for the Blind for the last nine years. He was the co-project leader for the Orion TI-84 Talking Graphing Calculator, the Orion TI-30XS MultiView Talking Scientific Calculator, and the Orbit Reader. Before accepting his current position, he worked as a self-employed programmer on an online game system, a founder and volunteer facilitator for

the Victoria Accessible technology user group, an instructor of Microsoft Office at the Reger group, and an accessible technology consultant for the Salt Lake Community College as well as for the Victoria Disability Resource Center.

KEVIN TUAN-HUYNH PHUNG

Cal State University Los Angeles, Student, Rehabilitation Services major

Kevin is an undergraduate student at Cal State University, Los Angeles majoring in Rehabilitation Services. He was diagnosed with High-Functioning Autism when he was about three-years-old. Kevin's goal is to become a counselor for youth who have disabilities. Kevin wants to focus mainly on helping youth who have invisible disabilities because he believe that they don't often get the services they need. He believes that guiding youth with disabilities to success will be a great benefit for the community. Kevin's hobbies include playing video games, using the internet, and spending time with friends. Kevin joined Survive or Thrive because he wants to promote awareness about youth with disabilities and help empower them so that they can someday achieve their goals. At his former school, Rio Hondo College, Kevin was the advertisement officer for Active Minds which is a mental health non-profit organization for college students. Kevin is also a part of Asians and Pacific Islanders with Disabilities of California (APIDC), an activist organization for Asians with disabilities.

DAMIAN PICKERING

HIMS

PRESENTERS

DEBBIE PICON



Bachelor Degree in Human Development; California School for the Blind, Counselor

Debbie has helped launch the Bridge Program and has worked in Residential/Apartment living skills program. Debbie's high energy and enthusiasm bring fun and inspiration to the students.

TRISTAN PIERCE



MIA; American Printing House for the Blind, Multiple Disabilities Project Leader

Tristan has over 30 years of experience working in educational publishing, the last 17 years as a Project Leader at the American Printing House for the Blind, focusing on Multiple Disabilities, Physical Education, and Art. Her job involves research and design, creative direction, product management, writing, editing, and field testing.

R MAUREEN REARDON

MA, Special Education, JD, Retired School Administrator



Maureen is a retired school administrator for the California School for the Blind, and an attorney.

ANDY ROBERTS

Local Representative - Sweetman Systems

Andy has been working as an Assistive Technology Specialist with Sweetman Systems since 2012. Mentored by Bob and Sue Sweetman, Andy enjoys helping students and professionals master the technology that makes

them competitive with their sighted colleagues and more independent at work and home. Recently, Andy has expanded his services into co-developing the accessible iOS application Pocket Recorder.

JOHN ROMEO



Full Cell Braille, Inc., Owner/Operator

John is the owner/operator of Full Cell Braille, Inc., and an Offender Workforce Development Specialist (OWDS)

for Southeastern Community College in Burlington, Iowa. As the owner/operator of Full Cell Braille, Inc., John has been transcribing braille for over 25 years. He has presented nationally for the National Braille Association (NBA), the California Transcribers and Educators for the Blind and Visually Impaired (CTEBVI), and provided training regarding braille transcription in his home state of Iowa. John is the creator and developer of "From Beyond the Walls," a program designed to allow prison braille programs to create professional-quality expert presentations for the CTBVI conference and present via video conferencing.

LELA RONDEAU

Coordinator Division of Special Education, Los Angeles Unified School District

Lela is a Coordinator in the Los Angeles Unified School District who supervises the provision of transition services for all students with disabilities in the District. She has worked in the field of transition since 2007. Lela serves as the state Government Relations Committee chair for WorkAbility I and is the Student Services and Special Education representative for the Association of California School Administrators in Region XVI.

MICHAEL ROSEN

PhD, Electrical/Biomedical Engineering; Vice-President, Engineering, E.A.S.Y. LLC

Mike is co-founder and Vice President of E.A.S.Y. LLC, a Burlington, VT firm that originates new tactile graphics technology for blind and low vision students. He has been with the engineering faculty at UVM since 2002, focusing on developing and teaching the EE/ME engineering design sequence. A project in his Senior Capstone Design course morphed into E.A.S.Y. LLC in 2011. Mike received his PhD in electrical/biomedical engineering from Northwestern in 1972, and has held teaching, research, and administrative positions at MIT, the University of Tennessee, and the National Rehabilitation Hospital.

NAOMI ROSENBERG

MArch; LightHouse for the Blind and Visually Impaired, Senior Designer, Accessible Media

Naomi is Senior Designer in the Media and Accessible Design Laboratory (MAD Lab) at the LightHouse, developing design standards and processes for tactile maps and graphics produced by 3D printer, embosser, and UV printer. Naomi has produced tactile graphics and 3D models in collaboration with educators and researchers creating curriculum for BVI students. As a designer for the TMAP project, Naomi aims to ensure that the maps are useful to the widest range of BVI travelers and educators.

L. PENNY ROSENBLUM



PhD; University of Arizona, Project Director

Penny joined the faculty for Psychoeducational Studies at the University of Arizona in

August 1999. Until fall 2016 she prepared teachers to work with children with visual impairments (TVIs) and coordinated teacher preparation programs in Arizona and Nevada. In July 2016 Dr. Rosenblum became the Project Director for the Institute of Education Sciences (IES) federal project, AnimalWatch Vi: Building Graphics Literacy. The aim of this project is to assist students with visual impairments learning pre-algebra concepts in building their skills at interpreting information presented in images (e.g., bar graphs, maps, diagrams). Previously she was the Project Director for the IES funded AnimalWatch Vi Suite.

S

DALIA SAKAS

BFA, Music from the University of Cincinnati - College/Conservatory of Music, a MFA, Music from the Manhattan School of Music, and a DMA from the University of South Carolina; Director of Music Studies at the Filomen M. D'Agostino Greenberg Music School of Lighthouse International.

Dr. Sakas is responsible for initiating and coordinating the Comprehensive Music Program for Young People, overseeing the piano program, designing and supervising curriculum design, in addition to serving as conductor to the esteemed Lighthouse Vocal Ensemble and Youth Chorus. Dr. Sakas studied at the Staatliche Hochschule für Musik und darstellende Kunst in Hamburg, Germany. She has performed extensively both as a solo pianist and as a partner to instrumentalists, singers, and actors. She has played throughout the United States and Europe. Her performances range from recitals in Weill Recital Hall, St. Michael's Hall and the Lithuanian Cultural Center to the cabaret venue Don't Tell Mama, where she appeared in a series of performances of melodramas. Dr. Sakas has been on the faculty of Lighthouse since

PRESENTERS

1995. She has served on the faculty of William Paterson University, NJ and continues to maintain her own private, thriving piano studio.

PATRICA SALCEDO

MA; State of California, Special Education Division, Desired Results Access Project (Napa County Office of Education), Co-Director

Patty is the Co-Director and Director of the Desired Results Access Project, which provides access to the statewide assessment for children with Individual Family Service Plans (IFSPs) and Individualized Education Programs (IEPs). She has taught extensively in early childhood special education, holding teaching credentials in visual impairment, learning handicaps, and general education; and a Master's degree in Educational Administration/ Policy Studies. Patty is the mother of two adult daughters, one of whom has multiple disabilities.

TORI SCHLADEN

MA Early Childhood Special Education; Partners for Pediatric Vision, Executive Director

Tori was the Director of the Family Resource Project at the Center for the Partially Sighted for 17 years before founding Partners for Pediatric Vision in 2016. Tori began her career at Junior Blind in 1987 and along with Dr. Bill Takeshita, OD, developed partnerships with educators and doctors to meet the needs of children with visual impairment and special needs and their families.

KATHY SCHLIMGEN

National Board Certification, Visual Impairments; Los Angeles Unified School District, TVI

Kathy is a TVI working in the LAUSD birth-to-three infant program.

SHERYL SCHMIDT



Multiple Subject Credential, Specialist Credential in VI, MA in Special Education, Early Childhood Special Education; San Bernardino County Superintendent of Schools,

Teacher of Visually Impaired

Sheryl received her BA in Liberal Studies from the University of La Verne. After two years of teaching third grade she began course work to become a VI teacher at Cal State LA. She has been a TVI for 24 years. Sheryl also holds a MA in Special Education, Early Childhood Low Incidence Disabilities.

TERENA SCOTT

MA, Orientation & Mobility, Orientation & Mobility Specialist

Terena is an itinerant O&M specialist for Lake County SELPA/Staff Rehab.

TOMMIE SEYMORE

EBAE Literary Certificate, Michigan Braille Transcribing Fund Transcriber

JENNIFER SILVERS

Jennifer Silvers is mother to a blind six-month-old daughter.

YUE-TING (TING) SIU



TVI/O&M, PhD; San Francisco State University, Assistant Professor

Ting is a Teacher of the Visually Impaired (TVI) and assistant professor in the Visual

Impairment Program at San Francisco State University. Her mission aims to improve TVIs' access to resources and align tech

CURRICULUM VITAE

developments with classroom implementation and accessibility needs. She can be found on Twitter @TVI_ting

BOB SWEETMAN



BS, JD, MS; CEO, Sweetman Systems

Sweetman Systems has been providing assistive technology to people with visual impairments since 1989. Bob honed his assistive technology skills during his 15 years as an attorney and as the technology instructor with Junior Blind of America and Sweetman Systems. He earned a BS from Stanford University, a JD from UC Davis, and an MS in Assistive Technology from Cal State Northridge.

T BILL TAKESHITA

Doctorate of Optometry; Braille Institute, Director of Low Vision



Dr. Takeshita is an optometrist who specializes in low vision and visual problems that affect learning.

GUY TOLES

BA, Marketing, Literary, Nemeth; AMAC Accessibility - Georgia Institute of Technology Braille Services Manager

Guy is the Braille Services Manager at AMAC Accessibility, a research center housed at the Georgia Institute of Technology's College of Design. He has a Bachelor's in Marketing from the University of Georgia and certifications from the Library of Congress as a literary and math/science (Nemeth) transcriber. He currently serves as member of the National Braille Association (NBA) and their Tactile Graphics Committee. He also represents

AMAC Accessibility on the board of the Braille Authority of North America (BANA) and is a member of their Electronic Braille Translation Committee. Guy has been involved with prison braille in many capacities for the past 10 years. He works on a daily basis with TDCJ and the Mountain View Braille Unit during that time including assisting in their first Beyond the Wall's Presentation. He has also helped AMAC, in collaboration with the Georgia Department of Corrections, begin a prison braille program at Emmanuel State Prison in Swainsboro, Georgia this past year.

JOAN TREPTOW



Literary Certification; Treps Consulting and Braille Service, Transcriber

Joanie has 27 years as a braille transcriber and seven years as an independent contractor. She served as CTEBVI president 1999-2000. She is a past Tactile Graphics Specialist, and is currently Large Print Specialist for CTEBVI.

PETER TUCIC

BA; Lead Blindness Product Specialist at HumanWare

Peter has been with HumanWare for three years as a Blindness Product Specialist. Prior to employment at HumanWare Peter was an Assistive Technology Specialist with the Chicago Lighthouse for five years. As a blind professional Peter has benefited immensely from assistive technology and is skilled at conveying their benefits to teachers and related professionals.

PRESENTERS

V ERIC VASILIAUSKAS (“DR. V.”)

MD and Associate Professor of Medicine & Pediatrics

Dr Vasiliauskas, frequently referred to as “Dr. V.”, is the father of two mainstreamed adventurous blind braille-reading sons. Dr. V has been a longtime advocate of early braille immersion, braille fluency, childhood access to foreign language braille for dual immersion families, and of childhood digital preparedness. He has been a strong proponent not only of equal expectations of blind and visually impaired students, but of high expectations of blindness/VI educators as well. Dr. V. has written numerous articles and has given many presentations including workshops and keynote presentations at the local, state, and national level on topics related to raising and educating blind & visually-impaired children. Professionally Dr. V. is an internationally-recognized expert in Inflammatory Bowel Disease and director of the Cedars-Sinai Nutrition and Integrative IBD Subspecialty Program.

MELIZA VERA CRUZ



BA, Communication Arts; California School for the Blind, Counselor

Meliza joined the Bridge program in 2016, and has worked in Residential/Apartment living skills program for 12 years. Meliza’s high energy and enthusiasm brings fun and inspiration to the students.

YURIKA VU

MA, VRT/O&M; California School for the Blind, Assistive Technology Coordinator

Yurika received her Master’s degree in Vision Rehab Therapy from Western Michigan University and Orientation & Mobility credential from San Francisco State University. She

has served in the field of blindness for over a decade. She currently works at the California School for the Blind as the Assistive Technology Coordinator. Previously, she worked at the Western Blind Rehab Center in Palo Alto as a Computer Access Technology Specialist working with visually impaired veterans and active duty service members. She was published as co-author in the *Journal of Visual Impairment: Neurological Vision Rehabilitation: Description and Case Study*.

W JONATHAN WAITE

MA, TVI; California School for the Blind, Teacher Specialist

Jonathan is a Vocation Teacher Specialist at CSB.

SUSAN WALKER

Lancaster School District, Teacher for Visually Impaired

Susan works for the Antelope Valley SELPA and has been a TVI for seven years.

JEANETTE WICKER

BA and MEd and certification in School Administration; American Printing House for the Blind, Project Leader

Jeanette has worked at the American Printing House for the Blind for the last twelve years. She was the co-project leader for the Orion TI-84 Talking Graphing Calculator, the Orion TI-30XS MultiView Talking Scientific Calculator, and the Orbit Reader. Before coming to APH, Jeanette served as Principal of the Kentucky School for the Blind, a consultant for the Kentucky Department of Education, a District Technology Coordinator, and a classroom teacher.

DAVE WILKINSON

**MEd, 20 years of experience in AT industry;
HIMS, National Training Manager**

Dave is a lifelong user of Access Technology and has 20 years of professional experience in the field. He has presented nationally and internationally on Assistive Technology topics including but not limited to GPS for the blind, creating and accessing e-books, and refreshable braille and mathematics. Before joining the HIMS team, Dave was an Access Technology Specialist for a number of companies and organizations including World Services for the Blind, HumanWare, and Freedom Scientific. When he's not surfing the net or listening to out-dated 70's art rock music, Dave enjoys spending time with his family, running, coin collecting, and a good book.

MATTHEW WILLIAMS

**EBAE, Nemeth, and Music Certificates.
Pending UEB, Nemeth w/UEB, UEB
Technical; Michigan Braille Transcribing
Fund, Production Manager**

KENNETH WITHERSPOON

**EBAE Literary Certificate; Michigan Braille
Transcribing Fund, Transcriber**

LINDA WYATT

**BA, MA, EdD ; California Department of
Education, Consultant**

Linda has been an educator for many years teaching low vision, blind, and deafblind students. She is the consultant for the Department of Education overseeing Low Incidence Funds, support for visually impaired students.

NANA KO YAMADA

MA, TVI; California School for the

Blind, Teacher Specialist

Nanako is a Vocation Teacher Specialist at CSB.

YAN ZHANG

**MS in Chemistry and Computer
Sciences; NLS Literary Certified; American
Printing House for the Blind, Tactile Graphic
Designer**

For 16 years Yan has been a Tactile Graphic Designer in the Accessible Tests and Textbooks Department at the American Printing House for the Blind. Prior to his career at APH, Yan worked as a Tactile Graphics Illustrator for course material production at Tactile Access to Education for Visually Impaired Students (TAEVIS) at Purdue University. He designs, develops, and quality reviews tactile graphics for textbooks and tests, and provides instructions to transcribers all over the United States and Canada. Yan served on the Tactile Graphics Committee of National Braille Association and conducted trainings on tactile graphics across the United States, Southeast Asia, and China.

SHELBY ZIMMERMAN

**MA, COMS; CSB Low Vision Program
Coordinator**

Shelby is the low vision program coordinator at California School for the Blind. She is a certified orientation & mobility specialist and is currently pursuing an education specialist credential in visual impairment. Shelby received her Master of Arts in Special Education degree from San Francisco State University. In addition to her low vision role, she teaches orientation & mobility and daily living skills to visually impaired individuals of all ages, and has worked as a guide dog instructor. Shelby has been an active volunteer with Guide Dogs for the Blind since 2002.

EXHIBITORS

Academy of Music for the Blind

911 Norumbega Drive, Monrovia, CA 91016
Phone: 626-358-5379
Website: www.ouramb.org
Contact: Gayle Pinto
Email: info@ouramb.org

Access Ingenuity

4751 Hoen Avenue, Santa Rosa, CA 95405
Phone: 707-579-4380
Website: www.accessingenuity.com
Contact: Michael Parker
Email: michaelp@accessingenuity.com

Actual Tactuals

Unified English Braille Practice Sentences

2116 Vine Drive, Merrick, NY 11566
Phone: 516-434-1506
Website: www.actual-tactuals.com
Contact: Roberta Becker
Email: actualtactuals@gmail.com

Aira

4225 Executive Square, LaJolla, CA 920370
Phone: 781-789-8596
Website: www.aira.io
Contact: Kelly Lovett
Email: Kelly@airo.io

American Printing House for the Blind

1839 Frankfort Avenue, Louisville, KY 40206
Phone: 800-223-1839
Website: www.aph.org
Contact: Cindy Amback
Email: camback@aph.org

American Thermoform Corporation

1758 Brackett Street, La Verne, CA 91750
Phone: 909-593-6711
Website: www.americanthermoform.com
Contact: Patrick Nunnelly
Email: pnunnelly@americanthermoform.com

Audiojack

11101 Aqua Vista #110, Studio City, CA 91602
Phone: 323-333-0347
Website: www.audiojack.com
Contact: David Tobin
Email: david@audiojack.com

Blind Color Nation

380 South Lake Avenue, Pasadena, CA 91101
Phone: 626-818-4275
Website: www.blindcolornation.com
Contact: Raymond Semaan
Email: info@blindcolornation.com

Braille Authority of North America

C/O 200 East Wells Street at Jernigan Place
Baltimore, MD 21230
Website: www.brailleauthority.org
Contact: Jennifer Dunnam
Email: info@brailleauthority.org

Braille Institute - Programs and Services

741 N Vermont Avenue, Los Angeles, CA 90029
Phone: 323-210-2602
Website: www.brailleinstitute.org
Contact: Christine Pak
Email: cgpak@brailleinstitute.org

Braille Wear, Inc.

Phone: 805-338-9853
Website: www.braillewear.shop
Instagram: Braillewear4u
Contact: Terry Keyson
Email: braillewear4u@gmail.com

California School for the Blind

500 Walnut Avenue, Fremont, CA 94536
Phone: 510-936-5506
Website: www.csb-cde.ca.gov
Contact: James Rudder
Email: jrudder@csb-cde.ca.gov

CAPVI - California Assoc. for Parents of Children with Visual Impairment

414 West Mill Street, Ukiah, CA 95482
Phone: 707-463-2296
Website: www.capvi.org
Contact: Anne Ward
Email: capvinews@gmail.com

Clearinghouse for Specialized Media & Technology (CSMT) - Curriculum Frameworks and Instructional Resources Division

1430 N Street Suites 3207 and 1205,
Sacramento, CA 95814
Phone: 916-319-0881
Website: www.cde.ca.gov/re/pn/sm
Contact: Kelli Cornejo
Email: csmt@cde.ca.gov

CTEBVI Silent Auction

**Department of Rehabilitation
Blind Field Service**

721 Capital Mall, Sacramento, CA 9581
Phone: 661-886-6534
Website: www.dor.ca.gov
Contact: Brian Winic
Email: bwinic@dor.ca.gov

Duxbury Systems, Inc.

270 Littleton Road Unit #6, Westford, MA 01886
Phone: 978-692-3000
Website: www.duxburysystems.com
Contact: Neal Kuniansky
Email: info@duxsys.com

Enhanced Vision - A VFO Company

5882 Machine Dr, Huntington Beach, CA 92649
Phone: 800-440-9476
Website: www.enhancedvision.com
Contact: Rose Mayer
Email: rmayer@enhancedvision.com

Exceptional Teaching Inc.

PO Box 2330, Livermore, CA 94550
Phone: 925-961-9200
Website: www.exceptionalteaching.com
Contact: Helene Holman
Email: info@exceptionalteaching.com

Guide Dogs for the Blind - Outreach

350 Los Ranchitos Road, San Rafael, CA 94903
Phone: 415-499-4000
Website: www.guidedogs.com
Contact: Jane Flower
Email: jflower@guidedogs.com

HIMS, Inc.

4616 W Howard Lane Ste 960
Austin, TX 78728
Phone: 512-837-2000
Website: www.hims-inc.com
Contact: Damian Pickering
Email: christine@hims-inc.com

HumanWare

1 UPS Way, PO Box 800, Champlain, NY 12919
Phone: 800-722-3393
Website: www.humanware.com
Contact: Francine Callaghan
Email: francine.callaghan@humanware.com

LightHouse for the Blind and Visually Impaired - MAD Lab

1155 Market Street 10th Floor
San Francisco, CA 94103
Phone: 415-694-7349
Website: www.lighthouse-sf.org
Contact: Joseph Gregory Kehret
Email: madlab@lighthouse-sf.org

Los Angeles Unified School District - Human Resources Certified Recruitment & Selection

333 South Beaudry Avenue 15th Floor
Los Angeles, CA 90017
Phone: 213-241-4901
Website: www.teachinla.com
Contact: Laura Tofft
Email: laura.tofft@lausd.net

EXHIBITORS

Lucky Touch Fortune Cookie

California School for the Blind

500 Walnut Avenue, Fremont, CA 94536

Phone: 510-459-4396

Contact: Judith Lesner

LVI America - Low Vision and Blindness

150 North Michigan Avenue Suite 1950

Chicago, IL 60601

Phone: 888-781-7811

Website: www.lviamerica.com

Contact: Charlie Collins

Email: charlie.collins@lviamerica.com

National Braille Press - Publications

88 Saint Stephen Street, Boston, MA 02115

Phone: 617-266-6160

Website: www.nbp.org

Contact: Tony Grima

Email: agrima@nbp.org

NorthState Assistive Technology

PO Box 2112, Paradise, CA 95967

Phone: 877-682-0452

Website: www.northstateat.com

Contact: Cory Hanosh

Email: info@northstateat.com

OrCam Technologies

1115 Broadway 11th Floor, New York, NY 10010

Phone: 800-713-3741

Website: www.orcam.com

Contact: Lena Lee

Email: lena.lee@orcam.com

Playopolis Toys, Inc.

667 West California Blvd, Pasadena, CA 91105

Phone: 626-792-2380

Website: www.playopolistoys.com

Contact: Christina Wallerstein

Email: Christina@playopolistoys.com

Sterling Adaptives

541 Farmers Lane, Santa Rosa, CA 95404

Phone: 415-878-2922

Website: www.sterlingadaptives.com

Contact: Lesley Ann Gibbons

Email: lesley@sterlingadaptives.com

Sweetman Systems

14237 Gain Street, Arleta, CA 91331

Phone: 818-893-5887

Website: www.sweetmansystems.com

Contact: Sue Sweetman

Email: sue@sweetmansystems.com

VFO

11800 31st Ct N, St Petersburg, FL 33716

Phone: 800-444-4443

Website: www.vfogroup.com

Contact: LeaAnn Kebart

Email: lkebart@vfogroup.com

ViewPlus Technologies

1965 SW Airport Avenue, Corvallis, OR 97333

Phone: 541-754-4002 x210

Website: www.viewplus.com

Contact: Dan Gardner

Email: dan.gardner@viewplus.com

Wayfinder Family Services

5300 Angeles Vista Blvd

Los Angeles, CA 90043

Phone: 323-295-6398

Website: www.wayfinderfamily.org

Contact: Donald Ouimet

Email: douimet@wayfinderfamily.org

YesAccessible!

911 Norumbega Drive, Monrovia, CA 91016

Phone: 626-358-5750

Website: www.yesaccessible.com

Contact: David and Gayle Pinto

Email: info@yesaccessible.com

CONNECT 12

AN INTEGRATED DIGITAL MAGNIFIER FOR YOUR CONNECTED LIFE

Seeing more and staying connected has never been this clever and simple



The Connect 12 combines a high-performance digital magnifier with the versatility of an Android tablet, plus unmatched ease of use and integrated access to online libraries such as Bookshare. This ideal solution for students with low vision allows free and open access to more than a million apps.

SEE MORE. DO MORE.

Smarter and more connected than all other low-vision products, HumanWare's Connect 12 is the evolution of the most advanced digital magnifier product line. The new interface options gives you all the tools you need in one place, allowing you to choose what you want to do: enlarge a printed document, read a book from the Bookshare library, adjust for your visual comfort, write an assignment, take a test and more.



Optional rechargeable
distance camera



New Diamond Edge™
high visibility icons



**LIGHT,
STURDY AND
FOLDABLE**



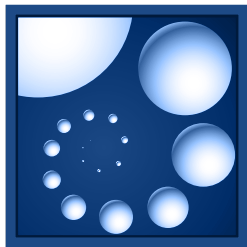
Learn more about what the Connect 12 can do for you.
Contact HumanWare at:

U.S.A. 1 800 722-3393 CANADA 1 888 723-7273

www.humanware.com

62 | Developing Professionals 2018

Humanware™
see things. differently.



A free braille transcription program developed by APH to help transcribers provide students with braille textbooks on the first day of class.

Stop by our pre-conference presentation to learn more:

Friday, April 13

3:30–4:30 p.m.

Session 401: *BrailleBlaster: A NEW FREE Braille Translation Software for Everyone*

This presentation will give an overview of the software and will have a Q&A session to help you better understand this amazing new tool and how you can use it in your everyday life.

For more information about BrailleBlaster, please visit brailleblaster.org



**AMERICAN
PRINTING
HOUSE**

800.223.1839

APH.ORG

